

For Research Use Only

# Mouse VCAM-1/CD106 Recombinant Matched Antibody Pair, PBS Only



Catalog Number:MP00701-4

## Capture Antibody Information

**Catalog Number:**  
83719-1-PBS  
**Host:**  
Rabbit  
**Isotype:**  
IgG  
**Purification Method:**  
Protein A purification

**Clone ID:**  
240597B2  
**Reactivity:**  
mouse

**Conjugate:**  
Unconjugated  
**Full name:**  
vascular cell adhesion molecule 1  
**Gene ID:**  
22329

## Detection Antibody Information

**Catalog Number:**  
83719-3-PBS  
**Host:**  
Rabbit  
**Isotype:**  
IgG  
**Purification Method:**  
Protein A purification

**Clone ID:**  
240597D2  
**Reactivity:**  
mouse  
**GenBank:**  
CAA47989.1

**Conjugate:**  
Unconjugated  
**Full name:**  
vascular cell adhesion molecule 1  
**Gene ID:**  
22329

## Applications

**Tested Applications:**  
Sandwich ELISA

**Range:**  
46.88-3000 pg/mL (Sandwich ELISA)

**Recommended Dilutions:**  
It is recommended that this reagent should be titrated in each testing system to obtain optimal results.

## Product Information

MP00701-4 targets VCAM-1/CD106 in immunoassays as a matched antibody pair. Validated in Sandwich ELISA.  
Capture antibody: Mouse VCAM-1/CD106 Recombinant antibody, PBS Only (Capture) 83719-1-PBS (240597B2). 100 µg. Concentration 1 mg/ml.  
Detection antibody: Mouse VCAM-1/CD106 Recombinant antibody, PBS Only (Capture/Detector) 83719-3-PBS (240597D2). 100 µg. Concentration 1 mg/ml.  
Alternative VCAM-1/CD106 matched antibody pairs: MP00701-1, MP00701-2, MP00701-3, MP01145-1, MP01145-2, MP01145-3  
Unconjugated rabbit recombinant monoclonal antibody pair in PBS only storage buffer at a concentration of 1 mg/mL, ready for conjugation. Created using Proteintech's proprietary in-house recombinant technology. Recombinant production enables unrivalled batch-to-batch consistency, easy scale-up, and future security of supply.  
Matched antibody pairs are designed for use in a variety of assays and platforms that require matched antibody pairs.  
Antibody use should be optimized for each application and assay.

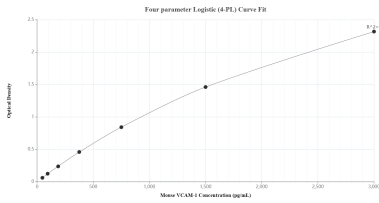
## Storage

**Storage:**  
Store at -80°C.  
**Storage buffer:**  
PBS only

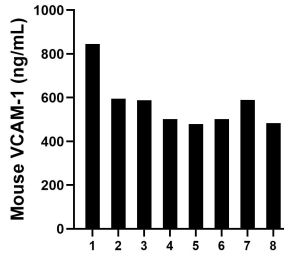
For technical support and original validation data for this product please contact:  
T: 1 (888) 4PTGLAB (1-888-478-4522) (toll free in USA), or 1(312) 455-8498 (outside USA) E: proteintech@ptglab.com W: ptglab.com

This product is exclusively available under Proteintech Group brand and is not available to purchase from any other manufacturer.

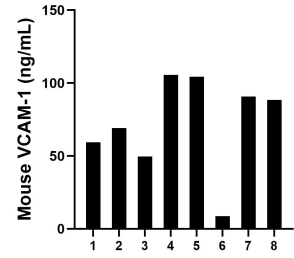
## Selected Validation Data



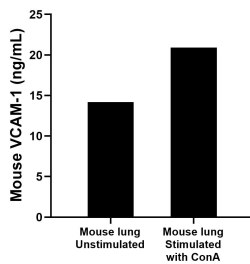
Sandwich ELISA standard curve of MP00701-4, Mouse VCAM-1/CD106 Recombinant Matched Antibody Pair - PBS only. 83719-1-PBS was coated to a plate as the capture antibody and incubated with serial dilutions of standard Eg0639. 83719-3-PBS was HRP conjugated as the detection antibody. Range: 46.88-3000 pg/mL



Serum of eight mice was measured. The VCAM-1 concentration of detected samples was determined to be 572.76 ng/mL with a range of 483.18-844.96 ng/mL



Urine of eight mice was measured. The VCAM-1 concentration of detected samples was determined to be 71.97 ng/mL with a range of 8.65-105.58 ng/mL



Mouse lung, cut into 1-2 mm pieces, was cultured for 3 days in 25-30 mL of RPMI supplemented with 10% fetal bovine serum and unstimulated or stimulated with 10 µg/mL ConA. The mean VCAM-1 concentration was determined to be 14.2 ng/mL in unstimulated mouse lung superantant, 20.9 ng/mL in ConA stimulated mouse lung superantant.