

For Research Use Only

SLC35A1 Recombinant Matched Antibody Pair, PBS Only



Catalog Number:MP00696-1

Capture Antibody Information

Catalog Number:
83746-2-PBS
Host:
Rabbit
Isotype:
IgG
Purification Method:
Protein A purification

Clone ID:
240824H4
Reactivity:
Human
Immunogen Catalog Number:
Ag9524

Conjugate:
Unconjugated
Full name:
solute carrier family 35 (CMP-sialic acid transporter), member A1
Gene ID:
10559

Detection Antibody Information

Catalog Number:
83746-1-PBS
Host:
Rabbit
Isotype:
IgG
Purification Method:
Protein A purification

Clone ID:
240824F6
Reactivity:
Human
GenBank:
BC017807
Immunogen Catalog Number:
Ag9524

Conjugate:
Unconjugated
Full name:
solute carrier family 35 (CMP-sialic acid transporter), member A1
Gene ID:
10559

Applications

Tested Applications:
Cytometric bead array

Range:
0.78-100 ng/mL (Cytometric Bead Array)

Recommended Dilutions:
It is recommended that this reagent should be titrated in each testing system to obtain optimal results.

Product Information

MP00696-1 targets SLC35A1 in immunoassays as a matched antibody pair. Validated in Cytometric bead array.

Capture antibody: SLC35A1 Recombinant antibody, PBS Only (Capture) 83746-2-PBS (240824H4). 100 µg. Concentration 1 mg/ml.

Detection antibody: SLC35A1 Recombinant antibody, PBS Only (Detector) 83746-1-PBS (240824F6). 100 µg. Concentration 1 mg/ml.

Alternative SLC35A1 matched antibody pairs: MP50154-1, MP50154-2

Unconjugated rabbit recombinant monoclonal antibody pair in PBS only storage buffer at a concentration of 1 mg/mL, ready for conjugation. Created using Proteintech's proprietary in-house recombinant technology. Recombinant production enables unrivalled batch-to-batch consistency, easy scale-up, and future security of supply.

Matched antibody pairs are designed for use in a variety of assays and platforms that require matched antibody pairs.

Antibody use should be optimized for each application and assay.

Storage

Storage:
Store at -80°C.
Storage buffer:
PBS only

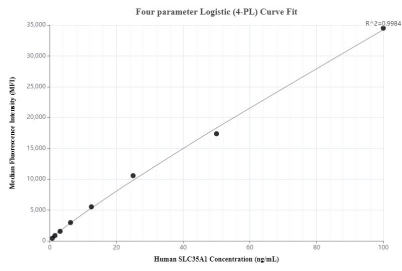
For technical support and original validation data for this product please contact:

T: 1 (888) 4PTGLAB (1-888-478-4522) (toll free in USA), or 1(312) 455-8498 (outside USA)

E: proteintech@ptglab.com
W: ptglab.com

This product is exclusively available under Proteintech Group brand and is not available to purchase from any other manufacturer.

Selected Validation Data



Cytometric bead array standard curve of MP00696-1, SLC35A1 Recombinant Matched Antibody Pair, PBS Only. Capture antibody: 83746-2-PBS. Detection antibody: 83746-1-PBS. Standard: Ag9524. Range: 0.78-100 ng/mL.