

For Research Use Only

CSPG4 Recombinant Matched Antibody Pair, PBS Only



Catalog Number:MP00694-3

Capture Antibody Information

Catalog Number:
83716-5-PBS

Host:
Rabbit

Isotype:
IgG

Purification Method:
Protein A purification

Clone ID:
240733D1

Reactivity:
human

Conjugate:
Unconjugated

Full name:
chondroitin sulfate proteoglycan 4

Gene ID:
1464

Detection Antibody Information

Catalog Number:
83716-2-PBS

Host:
Rabbit

Isotype:
IgG

Purification Method:
Protein A purification

Clone ID:
240733F12

Reactivity:
human

GenBank:
NM_001897.5

Conjugate:
Unconjugated

Full name:
chondroitin sulfate proteoglycan 4

Gene ID:
1464

Applications

Tested Applications:
Sandwich ELISA

Range:
0.156-10 ng/mL (Sandwich ELISA)

Recommended Dilutions:
It is recommended that this reagent should be titrated in each testing system to obtain optimal results.

Product Information

MP00694-3 targets CSPG4 in immunoassays as a matched antibody pair. Validated in Sandwich ELISA.

Capture antibody: CSPG4 Recombinant antibody, PBS Only (Capture) 83716-5-PBS (240733D1). 100 µg. Concentration 1 mg/ml.

Detection antibody: CSPG4 Recombinant antibody, PBS Only (Detector) 83716-2-PBS (240733F12). 100 µg. Concentration 1 mg/ml.

Alternative CSPG4 matched antibody pairs: MP00694-1, MP00694-2

Unconjugated rabbit recombinant monoclonal antibody pair in PBS only storage buffer at a concentration of 1 mg/mL, ready for conjugation. Created using Proteintech's proprietary in-house recombinant technology. Recombinant production enables unrivalled batch-to-batch consistency, easy scale-up, and future security of supply.

Matched antibody pairs are designed for use in a variety of assays and platforms that require matched antibody pairs.

Antibody use should be optimized for each application and assay.

Storage

Storage:
Store at -80°C.
Storage buffer:
PBS only

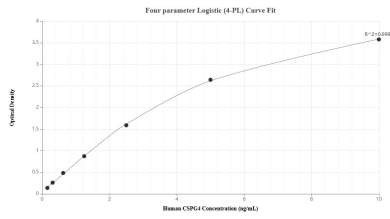
For technical support and original validation data for this product please contact:

T: 1 (888) 4PTGLAB (1-888-478-4522) (toll free in USA), or 1(312) 455-8498 (outside USA)

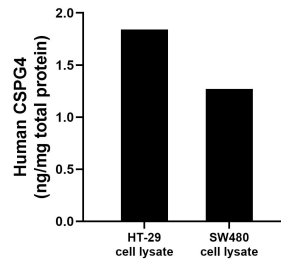
E: proteintech@ptglab.com
W: ptglab.com

This product is exclusively available under Proteintech Group brand and is not available to purchase from any other manufacturer.

Selected Validation Data



Sandwich ELISA standard curve of MP00694-3, Human CSPG4 Recombinant Matched Antibody Pair - PBS only. 83716-5-PBS was coated to a plate as the capture antibody and incubated with serial dilutions of standard Eg0201. 83716-2-PBS was HRP conjugated as the detection antibody. Range: 0.156-10 ng/mL



HT-29 cell lysate and SW480 cell lysate were measured. The human CSPG4 concentration was determined to be 1.84 ng/mg total protein in HT-29 cell lysate and 1.27 ng/mg total protein in SW480 cell lysate.