

For Research Use Only



Rat C-Reactive Protein/CRP Recombinant Matched Antibody Pair, PBS Only

Catalog Number:MP00692-1

Capture Antibody Information

Catalog Number:
83741-1-PBS

Host:
Rabbit

Isotype:
IgG

Purification Method:
Protein A purification

Clone ID:
240759D4

Reactivity:
rat

Conjugate:
Unconjugated

Full name:
C-reactive protein, pentraxin-related

Gene ID:
25419

Detection Antibody Information

Catalog Number:
83741-2-PBS

Host:
Rabbit

Isotype:
IgG

Purification Method:
Protein A purification

Clone ID:
240759E1

Reactivity:
rat

GenBank:
NM_017096.3

Conjugate:
Unconjugated

Full name:
C-reactive protein, pentraxin-related

Gene ID:
25419

Applications

Tested Applications:
Cytometric bead array

Range:
0.39-50 ng/mL (Cytometric Bead Array)

Recommended Dilutions:
It is recommended that this reagent should be titrated in each testing system to obtain optimal results.

Product Information

MP00692-1 targets C-Reactive Protein/CRP in immunoassays as a matched antibody pair. Validated in Cytometric bead array.

Capture antibody: Rat C-reactive protein Recombinant antibody, PBS Only (Capture) 83741-1-PBS (240759D4). 100 µg. Concentration 1 mg/ml.

Detection antibody: Rat C-reactive protein Recombinant antibody, PBS Only (Detector) 83741-2-PBS (240759E1). 100 µg. Concentration 1 mg/ml.

Alternative C-Reactive Protein/CRP matched antibody pairs: MP00692-2

Unconjugated rabbit recombinant monoclonal antibody pair in PBS only storage buffer at a concentration of 1 mg/mL, ready for conjugation. Created using Proteintech's proprietary in-house recombinant technology. Recombinant production enables unrivalled batch-to-batch consistency, easy scale-up, and future security of supply.

Matched antibody pairs are designed for use in a variety of assays and platforms that require matched antibody pairs.

Antibody use should be optimized for each application and assay.

Storage

Storage:
Store at -80°C.
Storage buffer:
PBS only

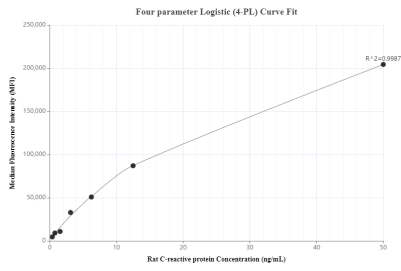
For technical support and original validation data for this product please contact:

T: 1 (888) 4PTGLAB (1-888-478-4522) (toll free in USA), or 1(312) 455-8498 (outside USA)

E: proteintech@ptglab.com
W: ptglab.com

This product is exclusively available under Proteintech Group brand and is not available to purchase from any other manufacturer.

Selected Validation Data



Cytometric bead array standard curve of MP00692-1, RAT C-Reactive Protein/CRP Recombinant Matched Antibody Pair, PBS Only. Capture antibody: 83741-1-PBS. Detection antibody: 83741-2-PBS. Standard: Eg0942. Range: 0.39-50 ng/mL