

RAE1 Recombinant Matched Antibody Pair, PBS Only

Catalog Number:MP00683-4

Capture Antibody Information

Catalog Number:

83712-5-PBS

Host:

Rabbit

Isotype:

IgG

Purification Method:

Protein A purification

Clone ID:

240861G1

Reactivity:

human

Immunogen Catalog Number:

Ag12102

Conjugate:

Unconjugated

Full name:

RAE1 RNA export 1 homolog (S. pombe)

Gene ID:

8480

Detection Antibody Information

Catalog Number:

83712-3-PBS

Host:

Rabbit

Isotype:

IgG

Purification Method:

Protein A purification

Clone ID:

240861H8

Reactivity:

human

GenBank:

BC103754

Immunogen Catalog Number:

Ag12102

Conjugate:

Unconjugated

Full name:

RAE1 RNA export 1 homolog (S. pombe)

Gene ID:

8480

Applications

Tested Applications:

Sandwich ELISA

Range:

78.1-5000 pg/mL (Sandwich ELISA)

Recommended Dilutions:

It is recommended that this reagent should be titrated in each testing system to obtain optimal results.

Product Information

MP00683-4 targets RAE1 in immunoassays as a matched antibody pair. Validated in Sandwich ELISA.

Capture antibody: RAE1 Recombinant antibody, PBS Only (Capture) 83712-5-PBS (240861G1). 100 µg. Concentration 1 mg/mL.

Detection antibody: RAE1 Recombinant antibody, PBS Only (Capture/Detector) 83712-3-PBS (240861H8). 100 µg. Concentration 1 mg/mL.

Alternative RAE1 matched antibody pairs: MP00683-1, MP00683-2, MP00683-3

Unconjugated rabbit recombinant monoclonal antibody pair in PBS only storage buffer at a concentration of 1 mg/mL, ready for conjugation. Created using Proteintech's proprietary in-house recombinant technology.

Recombinant production enables unrivalled batch-to-batch consistency, easy scale-up, and future security of supply.

Matched antibody pairs are designed for use in a variety of assays and platforms that require matched antibody pairs.

Antibody use should be optimized for each application and assay.

Storage

Storage:

Store at -80°C.

Storage buffer:

PBS only

For technical support and original validation data for this product please contact:

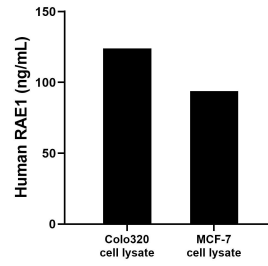
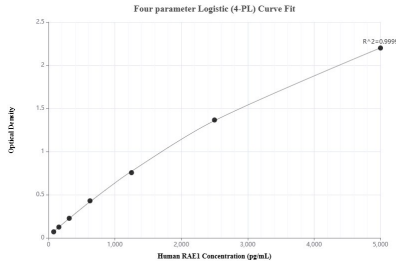
T: 1 (888) 4PTGLAB (1-888-478-4522) (toll free in USA), or 1(312) 455-8498 (outside USA)

E: proteintech@ptglab.com

W: ptglab.com

This product is exclusively available under Proteintech Group brand and is not available to purchase from any other manufacturer.

Selected Validation Data



Sandwich ELISA standard curve of MP00683-4, Human RAE1 Recombinant Matched Antibody Pair - PBS only. 83712-5-PBS was coated to a plate as the capture antibody and incubated with serial dilutions of standard Ag12102. 83712-3-PBS was HRP conjugated as the detection antibody. Range: 78.1-5000 pg/mL

Colo320 and MCF-7 cell lysates were measured. The human RAE1 concentration of detected samples was determined to be 123.92 ng/mL (based on a 2.00 mg/mL extract load) in Colo320 cell lysate and 93.86 ng/mL (based on a 1.20 mg/mL extract load) in MCF-7 cell lysate.