

For Research Use Only

# HSP47/SERPINH1 Recombinant Matched Antibody Pair, PBS Only



Catalog Number:MP00677-2

## Capture Antibody Information

**Catalog Number:**  
83689-4-PBS  
**Host:**  
Rabbit  
**Isotype:**  
IgG  
**Purification Method:**  
Protein A purification

**Clone ID:**  
240752F2  
**Reactivity:**  
human, mouse

**Conjugate:**  
Unconjugated  
**Full name:**  
serpin peptidase inhibitor, clade H (heat shock protein 47), member 1, (collagen binding protein 1)  
**Gene ID:**  
871

## Detection Antibody Information

**Catalog Number:**  
83689-3-PBS  
**Host:**  
Rabbit  
**Isotype:**  
IgG  
**Purification Method:**  
Protein A purification

**Clone ID:**  
240752F6  
**Reactivity:**  
human, mouse  
**GenBank:**  
NM\_001235.5

**Conjugate:**  
Unconjugated  
**Full name:**  
serpin peptidase inhibitor, clade H (heat shock protein 47), member 1, (collagen binding protein 1)  
**Gene ID:**  
871

## Applications

**Tested Applications:**  
Sandwich ELISA

**Range:**  
0.23-15 ng/mL (Sandwich ELISA)

**Recommended Dilutions:**  
It is recommended that this reagent should be titrated in each testing system to obtain optimal results.

## Product Information

MP00677-2 targets HSP47/SERPINH1 in immunoassays as a matched antibody pair. Validated in Sandwich ELISA.  
Capture antibody: HSP47/SERPINH1 Recombinant antibody, PBS Only (Capture) 83689-4-PBS (240752F2). 100 µg. Concentration 1 mg/ml.  
Detection antibody: HSP47/SERPINH1 Recombinant antibody, PBS Only (Detector) 83689-3-PBS (240752F6). 100 µg. Concentration 1 mg/ml.  
Alternative HSP47/SERPINH1 matched antibody pairs: MP00677-1  
Unconjugated rabbit recombinant monoclonal antibody pair in PBS only storage buffer at a concentration of 1 mg/mL, ready for conjugation. Created using Proteintech's proprietary in-house recombinant technology. Recombinant production enables unrivalled batch-to-batch consistency, easy scale-up, and future security of supply. Matched antibody pairs are designed for use in a variety of assays and platforms that require matched antibody pairs.  
Antibody use should be optimized for each application and assay.

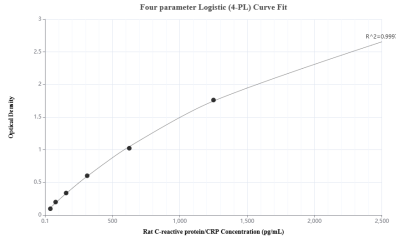
## Storage

**Storage:**  
Store at -80°C.  
**Storage buffer:**  
PBS only

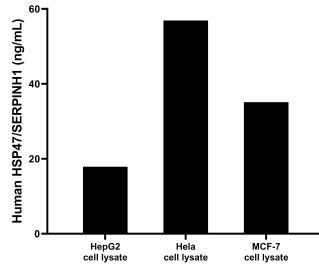
For technical support and original validation data for this product please contact:  
T: 1 (888) 4PTGLAB (1-888-478-4522) (toll free in USA), or 1(312) 455-8498 (outside USA) E: proteintech@ptglab.com W: ptglab.com

This product is exclusively available under Proteintech Group brand and is not available to purchase from any other manufacturer.

## Selected Validation Data



Sandwich ELISA standard curve of MP00677-2, Human HSP47/SERPINH1 Recombinant Matched Antibody Pair - PBS only. 83689-4-PBS was coated to a plate as the capture antibody and incubated with serial dilutions of standard Eg1201. 83689-3-PBS was HRP conjugated as the detection antibody. Range: 0.23-15 ng/mL



HepG2, HeLa and MCF-7 cells were cultured in DMEM supplemented with 10% fetal bovine serum, 100 U/mL penicillin, and 100 µg/mL streptomycin sulfate. Aliquots of the cell culture supernates were removed. Cells were lysed and assayed for human HSP47/SERPINH1. Human HSP47/SERPINH1 in HepG2 cell lysate measured 17.9 ng/mL. Human HSP47/SERPINH1 in HeLa cell lysate measured 56.9 ng/mL. Human HSP47/SERPINH1 in MCF-7 cell lysate