

For Research Use Only

B2M Recombinant Matched Antibody Pair, PBS Only



Catalog Number:MP00673-3

Capture Antibody Information

Catalog Number:

83683-1-PBS

Host:

Rabbit

Isotype:

IgG

Purification Method:

Protein A purification

Clone ID:

240660B1

Reactivity:

human

Immunogen Catalog Number:

Ag4433

Conjugate:

Unconjugated

Full name:

beta-2-microglobulin

Gene ID:

567

Detection Antibody Information

Catalog Number:

83683-5-PBS

Host:

Rabbit

Isotype:

IgG

Purification Method:

Protein A purification

Clone ID:

240660B3

Reactivity:

human

GenBank:

BC032589

Immunogen Catalog Number:

Ag4433

Conjugate:

Unconjugated

Full name:

beta-2-microglobulin

Gene ID:

567

Applications

Tested Applications:

Sandwich ELISA

Range:

0.625-40 ng/mL (Sandwich ELISA)

Recommended Dilutions:

It is recommended that this reagent should be titrated in each testing system to obtain optimal results.

Product Information

MP00673-3 targets B2M in immunoassays as a matched antibody pair. Validated in Sandwich ELISA.

Capture antibody: B2M Recombinant antibody, PBS Only (Capture) 83683-1-PBS (240660B1). 100 µg. Concentration 1 mg/mL.

Detection antibody: B2M Recombinant antibody, PBS Only (Detector) 83683-5-PBS (240660B3). 100 µg. Concentration 1 mg/mL.

Alternative B2M matched antibody pairs: MP00673-1, MP00673-2, MP50108-1

Unconjugated rabbit recombinant monoclonal antibody pair in PBS only storage buffer at a concentration of 1 mg/mL, ready for conjugation. Created using Proteintech's proprietary in-house recombinant technology.

Recombinant production enables unrivalled batch-to-batch consistency, easy scale-up, and future security of supply.

Matched antibody pairs are designed for use in a variety of assays and platforms that require matched antibody pairs.

Antibody use should be optimized for each application and assay.

Storage

Storage:

Store at -80°C.

Storage buffer:

PBS only

For technical support and original validation data for this product please contact:

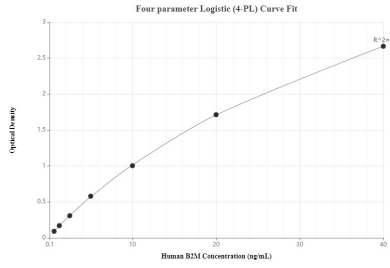
T: 1 (888) 4PTGLAB (1-888-478-4522) (toll free in USA), or 1(312) 455-8498 (outside USA)

E: proteintech@ptglab.com

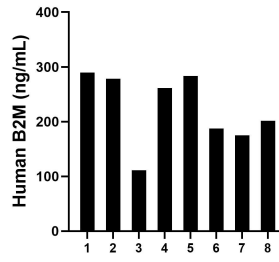
W: ptglab.com

This product is exclusively available under Proteintech Group brand and is not available to purchase from any other manufacturer.

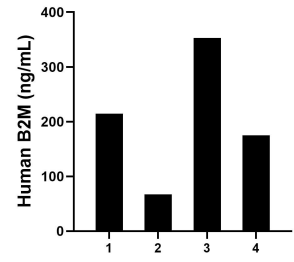
Selected Validation Data



Sandwich ELISA standard curve of MP00673-3, human B2M Recombinant Matched Antibody Pair - PBS only. 83683-1-PBS was coated to a plate as the capture antibody and incubated with serial dilutions of standard Ag4433. 83683-5-PBS was HRP conjugated as the detection antibody. Range: 0.625-40 ng/mL.



Serum of eight individual healthy human donors was measured. The B2M concentration of detected samples was determined to be 223.48 ng/mL with a range of 111.44-289.89 ng/mL.



Urine of eight individual healthy human donors was measured. The B2M concentration of detected samples was determined to be 202.46 ng/mL with a range of 67.46-352.77 ng/mL.