

For Research Use Only

Alpha-1-microglobulin Recombinant Matched Antibody Pair, PBS Only



Catalog Number:MP00658-2

Capture Antibody Information

Catalog Number:
83678-2-PBS
Host:
Rabbit
Isotype:
IgG
Purification Method:
Protein A purification

Clone ID:
240751G12
Reactivity:
human

Conjugate:
Unconjugated
Full name:
alpha-1-microglobulin/bikunin precursor
Gene ID:
259

Detection Antibody Information

Catalog Number:
83678-4-PBS
Host:
Rabbit
Isotype:
IgG
Purification Method:
Protein A purification

Clone ID:
240751F6
Reactivity:
human
GenBank:
NM_001633.4

Conjugate:
Unconjugated
Full name:
alpha-1-microglobulin/bikunin precursor
Gene ID:
259

Applications

Tested Applications:
Sandwich ELISA

Range:
0.31-20 ng/mL (Sandwich ELISA)

Recommended Dilutions:
It is recommended that this reagent should be titrated in each testing system to obtain optimal results.

Product Information

MP00658-2 targets Alpha-1-microglobulin in immunoassays as a matched antibody pair. Validated in Sandwich ELISA.

Capture antibody: Alpha-1-microglobulin Recombinant antibody, PBS Only (Capture) 83678-2-PBS (240751G12). 100 µg. Concentration 1 mg/mL.

Detection antibody: Alpha-1-microglobulin Recombinant antibody, PBS Only (Detector) 83678-4-PBS (240751F6). 100 µg. Concentration 1 mg/mL.

Unconjugated rabbit recombinant monoclonal antibody pair in PBS only storage buffer at a concentration of 1 mg/mL, ready for conjugation. Created using Proteintech's proprietary in-house recombinant technology. Recombinant production enables unrivalled batch-to-batch consistency, easy scale-up, and future security of supply.

Matched antibody pairs are designed for use in a variety of assays and platforms that require matched antibody pairs.

Antibody use should be optimized for each application and assay.

Storage

Storage:
Store at -80°C.
Storage buffer:
PBS only

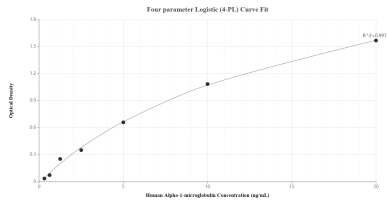
For technical support and original validation data for this product please contact:

T: 1 (888) 4PTGLAB (1-888-478-4522) (toll free in USA), or 1(312) 455-8498 (outside USA)

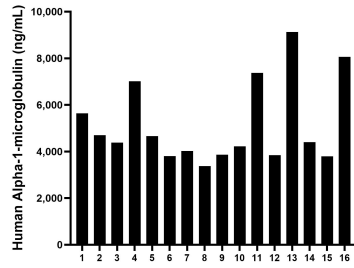
E: proteintech@ptglab.com
W: ptglab.com

This product is exclusively available under Proteintech Group brand and is not available to purchase from any other manufacturer.

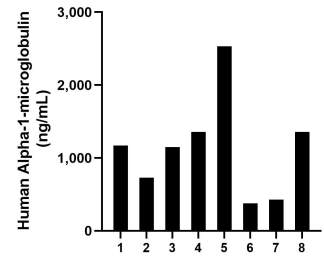
Selected Validation Data



Sandwich ELISA standard curve of MP00658-2, Human Alpha-1-microglobulin Recombinant Matched Antibody Pair - PBS only. 83678-2-PBS was coated to a plate as the capture antibody and incubated with serial dilutions of standard Eg1127. 83678-4-PBS was HRP conjugated as the detection antibody. Range: 0.31-20 ng/mL



Serum of sixteen individual healthy human donors was measured. The Alpha-1-microglobulin concentration of detected samples was determined to be 5,141.28 ng/mL with a range of 3,368.97 - 9,130.33 ng/mL



Urine of eight individual healthy human donors was measured. The Alpha-1-microglobulin concentration of detected samples was determined to be 1,137.8 ng/mL with a range of 377.6 - 2,533.2 ng/mL