

DLAT Recombinant Matched Antibody Pair, PBS Only

Catalog Number:MP00635-3

Capture Antibody Information

Catalog Number:

83654-3-PBS

Host:

Rabbit

Isotype:

IgG

Purification Method:

Protein A purification

Clone ID:

240713C12

Reactivity:

Human

Immunogen Catalog Number:

Ag22831

Conjugate:

Unconjugated

Full name:

dihydrolipoamide S-acetyltransferase

Gene ID:

1737

Detection Antibody Information

Catalog Number:

83654-2-PBS

Host:

Rabbit

Isotype:

IgG

Purification Method:

Protein A purification

Clone ID:

240713D9

Reactivity:

Human

GenBank:

BC039084

Immunogen Catalog Number:

Ag22831

Conjugate:

Unconjugated

Full name:

dihydrolipoamide S-acetyltransferase

Gene ID:

1737

Applications

Tested Applications:

Cytometric bead array

Range:

0.313-40 ng/mL (Cytometric Bead Array)

Recommended Dilutions:

It is recommended that this reagent should be titrated in each testing system to obtain optimal results.

Product Information

MP00635-3 targets DLAT in immunoassays as a matched antibody pair. Validated in Cytometric bead array.

Capture antibody: DLAT Recombinant antibody, PBS Only (Capture) 83654-3-PBS (240713C12). 100 µg. Concentration 1 mg/ml.

Detection antibody: DLAT Recombinant antibody, PBS Only (Detector) 83654-2-PBS (240713D9). 100 µg. Concentration 1 mg/ml.

Alternative DLAT matched antibody pairs: MP00635-1, MP00635-2

Unconjugated rabbit recombinant monoclonal antibody pair in PBS only storage buffer at a concentration of 1 mg/mL, ready for conjugation. Created using Proteintech's proprietary in-house recombinant technology.

Recombinant production enables unrivalled batch-to-batch consistency, easy scale-up, and future security of supply.

Matched antibody pairs are designed for use in a variety of assays and platforms that require matched antibody pairs.

Antibody use should be optimized for each application and assay.

Storage

Storage:

Store at -80°C.

Storage buffer:

PBS only

For technical support and original validation data for this product please contact:

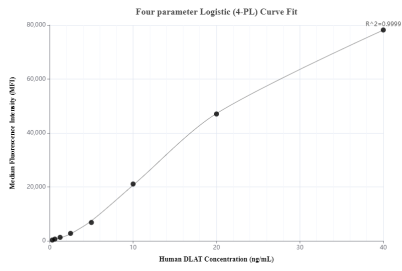
T: 1 (888) 4PTGLAB (1-888-478-4522) (toll free in USA), or 1(312) 455-8498 (outside USA)

E: proteintech@ptglab.com

W: ptglab.com

This product is exclusively available under Proteintech Group brand and is not available to purchase from any other manufacturer.

Selected Validation Data



Cytometric bead array standard curve of MP00635-3, DLAT Recombinant Matched Antibody Pair, PBS Only. Capture antibody: 83654-3-PBS. Detection antibody: 83654-2-PBS. Standard: Ag22831. Range: 0.313-40 ng/mL