

For Research Use Only

# PD-1/CD279 Recombinant Matched Antibody Pair, PBS Only



Catalog Number:MP00612-4

## Capture Antibody Information

**Catalog Number:**  
83632-5-PBS  
**Host:**  
Rabbit  
**Isotype:**  
IgG  
**Purification Method:**  
Protein A purification

**Clone ID:**  
240724C5  
**Reactivity:**  
human

**Conjugate:**  
Unconjugated  
**Full name:**  
programmed cell death 1  
**Gene ID:**  
5133

## Detection Antibody Information

**Catalog Number:**  
83632-4-PBS  
**Host:**  
Rabbit  
**Isotype:**  
IgG  
**Purification Method:**  
Protein A purification

**Clone ID:**  
240724G9  
**Reactivity:**  
human  
**GenBank:**  
BC074740

**Conjugate:**  
Unconjugated  
**Full name:**  
programmed cell death 1  
**Gene ID:**  
5133

## Applications

**Tested Applications:**  
Sandwich ELISA

**Range:**  
31.25-2000 pg/mL (Sandwich ELISA)

**Recommended Dilutions:**  
It is recommended that this reagent should be titrated in each testing system to obtain optimal results.

## Product Information

MP00612-4 targets PD-1/CD279 in immunoassays as a matched antibody pair. Validated in Sandwich ELISA.

Capture antibody: PD-1/CD279 Recombinant antibody, PBS Only (Capture) 83632-5-PBS (240724C5). 100 µg. Concentration 1 mg/ml.

Detection antibody: PD-1/CD279 Recombinant antibody, PBS Only (Detector) 83632-4-PBS (240724G9). 100 µg. Concentration 1 mg/ml.

Alternative PD-1/CD279 matched antibody pairs: MP00612-1, MP00612-2, MP00612-3

Unconjugated rabbit recombinant monoclonal antibody pair in PBS only storage buffer at a concentration of 1 mg/mL, ready for conjugation. Created using Proteintech's proprietary in-house recombinant technology. Recombinant production enables unrivalled batch-to-batch consistency, easy scale-up, and future security of supply.

Matched antibody pairs are designed for use in a variety of assays and platforms that require matched antibody pairs.

Antibody use should be optimized for each application and assay.

## Storage

**Storage:**  
Store at -80°C.  
**Storage buffer:**  
PBS only

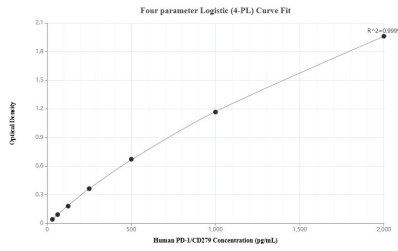
For technical support and original validation data for this product please contact:

T: 1 (888) 4PTGLAB (1-888-478-4522) (toll free in USA), or 1(312) 455-8498 (outside USA)

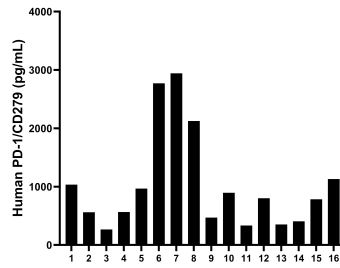
E: [proteintech@ptglab.com](mailto:proteintech@ptglab.com)  
W: [ptglab.com](http://ptglab.com)

**This product is exclusively available under Proteintech Group brand and is not available to purchase from any other manufacturer.**

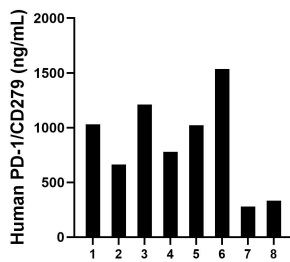
## Selected Validation Data



Sandwich ELISA standard curve of MP00612-4, Human PD-1/CD279 Recombinant Matched Antibody Pair - PBS only. 83632-5-PBS was coated to a plate as the capture antibody and incubated with serial dilutions of standard Eg0974. 83632-4-PBS was HRP conjugated as the detection antibody. Range: 31.25-2000 pg/mL



For the PBMC supernatant cultured for 5 days, the mean human PD-1/CD279 concentration was determined to be 382.5 pg/mL in PHA stimulated PBMC supernatant.



Urine of eight individual healthy human was measured. The PD-1/CD279 concentration of detected samples was determined to be 856.9 pg/mL with a range of 280.3 - 1,536.5 pg/mL