

For Research Use Only

Rat VEGF 164 Recombinant Matched Antibody Pair, PBS Only



Catalog Number:MP00598-3

Capture Antibody Information

Catalog Number:

83610-1-PBS

Host:

Rabbit

Isotype:

IgG

Purification Method:

Protein A purification

Clone ID:

240573B1

Reactivity:

rat

Conjugate:

Unconjugated

Full name:

vascular endothelial growth factor A

Gene ID:

83785

Detection Antibody Information

Catalog Number:

83610-2-PBS

Host:

Rabbit

Isotype:

IgG

Purification Method:

Protein A purification

Clone ID:

240573B3

Reactivity:

rat

GenBank:

NM_001287108.1

Conjugate:

Unconjugated

Full name:

vascular endothelial growth factor A

Gene ID:

83785

Applications

Tested Applications:

Sandwich ELISA

Range:

31.25-2000 pg/mL (Sandwich ELISA)

Recommended Dilutions:

It is recommended that this reagent should be titrated in each testing system to obtain optimal results.

Product Information

MP00598-3 targets VEGF 164 in immunoassays as a matched antibody pair. Validated in Sandwich ELISA.

Capture antibody: Rat VEGF 164 Recombinant antibody, PBS Only (Capture/Detector) 83610-1-PBS (240573B1). 100 µg. Concentration 1 mg/ml.

Detection antibody: Rat VEGF 164 Recombinant antibody, PBS Only (Capture/Detector) 83610-2-PBS (240573B3). 100 µg. Concentration 1 mg/ml.

Alternative VEGF 164 matched antibody pairs: MP00598-1, MP00598-2

Unconjugated rabbit recombinant monoclonal antibody pair in PBS only storage buffer at a concentration of 1 mg/mL, ready for conjugation. Created using Proteintech's proprietary in-house recombinant technology.

Recombinant production enables unrivalled batch-to-batch consistency, easy scale-up, and future security of supply.

Matched antibody pairs are designed for use in a variety of assays and platforms that require matched antibody pairs.

Antibody use should be optimized for each application and assay.

Storage

Storage:

Store at -80°C.

Storage buffer:

PBS only

For technical support and original validation data for this product please contact:

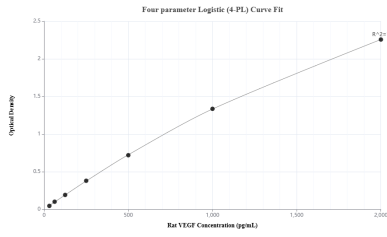
T: 1 (888) 4PTGLAB (1-888-478-4522) (toll free in USA), or 1(312) 455-8498 (outside USA)

E: proteintech@ptglab.com

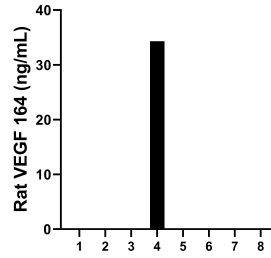
W: ptglab.com

This product is exclusively available under Proteintech Group brand and is not available to purchase from any other manufacturer.

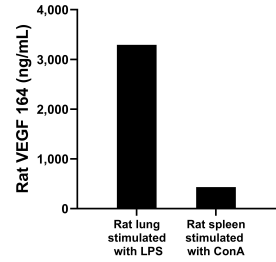
Selected Validation Data



Sandwich ELISA standard curve of MP00598-3, Rat VEGF Recombinant Matched Antibody Pair - PBS only. 83610-1-PBS was coated to a plate as the capture antibody and incubated with serial dilutions of standard Eg0941. 83610-2-PBS was HRP conjugated as the detection antibody. Range: 31.25-2000 pg/mL



Serum of eight rats was measured. The VEGF 164 concentration of one sample was determined to be 34.3 pg/mL, and the range of VEGF 164 concentration was 0 - 34.3 pg/mL.



Rat Lung, cut into 1-2 mm pieces, was cultured for 4 days in 25-30 mL of RPMI supplemented with 10% fetal bovine serum and stimulated with 2.5 ng/mL LPS. The cell culture supernatant was removed, assayed for rat VEGF, and measured 3292.9 pg/mL. Rat spleen, cut into 1-2 mm pieces, was cultured for 3-4 days in 25-30 mL of RPMI supplemented with 10% fetal bovine serum and stimulated with 10 µg/mL ConA. The cell culture supernatant was removed, assayed for