

For Research Use Only

ATM Recombinant Matched Antibody Pair, PBS Only



Catalog Number:MP00592-4

Capture Antibody Information

Catalog Number:
83608-6-PBS

Host:
Rabbit

Isotype:
IgG

Purification Method:
Protein A purification

Clone ID:
240560F4

Reactivity:
human

Immunogen Catalog Number:
Ag25920

Conjugate:
Unconjugated

Full name:
ataxia telangiectasia mutated

Gene ID:
472

Detection Antibody Information

Catalog Number:
83608-4-PBS

Host:
Rabbit

Isotype:
IgG

Purification Method:
Protein A purification

Clone ID:
240560H8

Reactivity:
human

GenBank:
BC137169

Immunogen Catalog Number:
Ag25920

Conjugate:
Unconjugated

Full name:
ataxia telangiectasia mutated

Gene ID:
472

Applications

Tested Applications:
Sandwich ELISA

Range:
39.1-2500 pg/mL (Sandwich ELISA)

Recommended Dilutions:
It is recommended that this reagent should be titrated in each testing system to obtain optimal results.

Product Information

MP00592-4 targets ATM in immunoassays as a matched antibody pair. Validated in Sandwich ELISA.

Capture antibody: ATM Recombinant antibody, PBS Only (Capture) 83608-6-PBS (240560F4). 100 µg. Concentration 1 mg/ml.

Detection antibody: ATM Recombinant antibody, PBS Only (Detector) 83608-4-PBS (240560H8). 100 µg. Concentration 1 mg/ml.

Alternative ATM matched antibody pairs: MP00592-1, MP00592-2, MP00592-3

Unconjugated rabbit recombinant monoclonal antibody pair in PBS only storage buffer at a concentration of 1 mg/mL, ready for conjugation. Created using Proteintech's proprietary in-house recombinant technology. Recombinant production enables unrivalled batch-to-batch consistency, easy scale-up, and future security of supply.

Matched antibody pairs are designed for use in a variety of assays and platforms that require matched antibody pairs.

Antibody use should be optimized for each application and assay.

Storage

Storage:
Store at -80°C.
Storage buffer:
PBS only

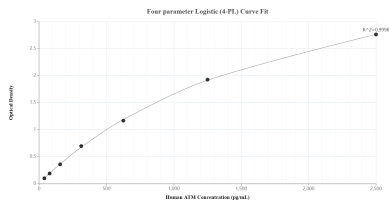
For technical support and original validation data for this product please contact:

T: 1 (888) 4PTGLAB (1-888-478-4522) (toll free in USA), or 1(312) 455-8498 (outside USA)

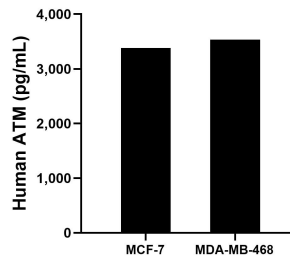
E: proteintech@ptglab.com
W: ptglab.com

This product is exclusively available under Proteintech Group brand and is not available to purchase from any other manufacturer.

Selected Validation Data



Sandwich ELISA standard curve of MP00592-4, Human ATM Recombinant Matched Antibody Pair - PBS only. 83608-6-PBS was coated to a plate as the capture antibody and incubated with serial dilutions of standard Ag25920. 83608-4-PBS was HRP conjugated as the detection antibody. Range: 39.1-2500 pg/mL



The mean ATM concentration was determined to be 3,383.80 pg/mL in MCF-7 cell extract based on a 1.20 mg/mL extract load and 3,536.69 pg/mL in MDA-MB-468 cell extract based on a 3.20 mg/mL extract load.