

For Research Use Only

phospho(409/410)-TDP43 Recombinant Matched Antibody Pair, PBS Only



Catalog Number:MP00589-2

Capture Antibody Information

Catalog Number:
80007-1-RR

Host:
Rabbit

Isotype:
IgG

Purification Method:
Protein A purification

Clone ID:
6M10

Reactivity:
Human, mouse

Conjugate:
Unconjugated

Full name:
TAR DNA binding protein

Gene ID:
23435

Detection Antibody Information

Catalog Number:
80002-1-RR

Host:
Rabbit

Isotype:
IgG

Purification Method:
Protein A purification

Clone ID:
16A22

Reactivity:
Human, mouse, rat

GenBank:
BC001487

Immunogen Catalog Number:
Ag1231

Conjugate:
Unconjugated

Full name:
TAR DNA binding protein

Gene ID:
23435

Applications

Tested Applications:
Cytometric bead array

Range:

Recommended Dilutions:
It is recommended that this reagent should be titrated in each testing system to obtain optimal results.

Product Information

MP00589-2 targets phospho(409/410)-TDP43 in immunoassays as a matched antibody pair. Validated in Cytometric bead array.

Capture antibody: Phospho-TDP43 (Ser409/410) Recombinant antibody 80007-1-RR (6M10). 100 µg. Concentration 1 mg/ml.

Detection antibody: TDP-43 Recombinant antibody 80002-1-RR (16A22). 100 µg. Concentration 1 mg/ml.

Alternative phospho(409/410)-TDP43 matched antibody pairs: MP00589-1

Unconjugated rabbit recombinant monoclonal antibody pair in PBS only (BSA and azide free) storage buffer at a concentration of 1 mg/mL, ready for conjugation. Created using Proteintech's proprietary in-house recombinant technology. Recombinant production enables unrivalled batch-to-batch consistency, easy scale-up, and future security of supply.

Matched antibody pairs are designed for use in a variety of assays and platforms that require matched antibody pairs.

Antibody use should be optimized for each application and assay.

Storage

Storage:
Store at -80°C.
Storage buffer:
PBS only

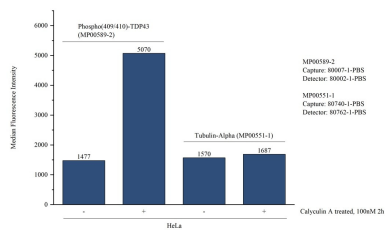
For technical support and original validation data for this product please contact:

T: 1 (888) 4PTGLAB (1-888-478-4522) (toll free in USA), or 1(312) 455-8498 (outside USA)

E: proteintech@ptglab.com
W: ptglab.com

This product is exclusively available under Proteintech Group brand and is not available to purchase from any other manufacturer.

Selected Validation Data



Cytometric bead array in cell lysate using MP00589-2, phospho(409/410)-TDP43 Recombinant Matched Antibody Pair, PBS Only. Capture antibody: 80007-1-PBS. Detection antibody: 80002-1-PBS. Cell lysate(30µg/well): Non-treated HeLa and Calyculin A treated HeLa cells were lysed in 8M urea buffer and diluted in assay buffer. Non-related target Tubulin-Alpha Recombinant Matched Antibody Pair (MP00551-1) was served as control.