

For Research Use Only

SLC39A14 Recombinant Matched Antibody Pair, PBS Only



Catalog Number:MP00583-3

Capture Antibody Information

Catalog Number:
83597-3-PBS
Host:
Rabbit
Isotype:
IgG
Purification Method:
Protein A purification

Clone ID:
240577B3
Reactivity:
human
Immunogen Catalog Number:
Ag24210

Conjugate:
Unconjugated
Full name:
solute carrier family 39 (zinc transporter), member 14
Gene ID:
23516

Detection Antibody Information

Catalog Number:
83597-2-PBS
Host:
Rabbit
Isotype:
IgG
Purification Method:
Protein A purification

Clone ID:
240577G11
Reactivity:
human
GenBank:
BC015770
Immunogen Catalog Number:
Ag24210

Conjugate:
Unconjugated
Full name:
solute carrier family 39 (zinc transporter), member 14
Gene ID:
23516

Applications

Tested Applications:
Sandwich ELISA

Range:
0.195-12.5 ng/mL (Sandwich ELISA)

Recommended Dilutions:
It is recommended that this reagent should be titrated in each testing system to obtain optimal results.

Product Information

MP00583-3 targets SLC39A14 in immunoassays as a matched antibody pair. Validated in Sandwich ELISA.

Capture antibody: SLC39A14/ZIP-14 Recombinant antibody, PBS Only (Capture/Detector) 83597-3-PBS (240577B3). 100 µg. Concentration 1 mg/ml.

Detection antibody: SLC39A14/ZIP-14 Recombinant antibody, PBS Only (Capture/Detector) 83597-2-PBS (240577G11). 100 µg. Concentration 1 mg/ml.

Unconjugated rabbit recombinant monoclonal antibody pair in PBS only storage buffer at a concentration of 1 mg/mL, ready for conjugation. Created using Proteintech's proprietary in-house recombinant technology. Recombinant production enables unrivalled batch-to-batch consistency, easy scale-up, and future security of supply.

Matched antibody pairs are designed for use in a variety of assays and platforms that require matched antibody pairs.

Antibody use should be optimized for each application and assay.

Storage

Storage:
Store at -80°C.
Storage buffer:
PBS only

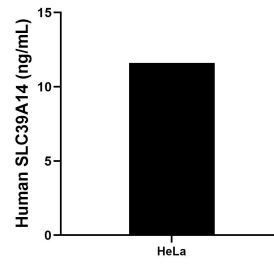
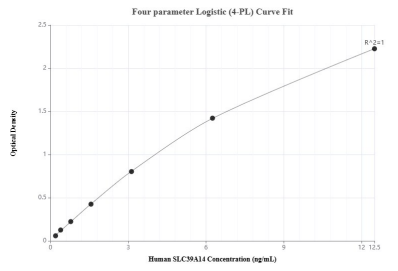
For technical support and original validation data for this product please contact:

T: 1 (888) 4PTGLAB (1-888-478-4522) (toll free in USA), or 1(312) 455-8498 (outside USA)

E: proteintech@ptglab.com
W: ptglab.com

This product is exclusively available under Proteintech Group brand and is not available to purchase from any other manufacturer.

Selected Validation Data



Sandwich ELISA standard curve of MP00583-3, Human SLC39A14 Recombinant Matched Antibody Pair - PBS only. 83597-3-PBS was coated to a plate as the capture antibody and incubated with serial dilutions of standard Ag24210. 83597-2-PBS was HRP conjugated as the detection antibody. Range:0.195-12.5 ng/mL

The mean SLC39A14 concentration was determined to be 11.60 ng/mL in HeLa cell extract based on a 1.3 mg/mL extract load.