

For Research Use Only

# SLC39A14 Recombinant Matched Antibody Pair, PBS Only



Catalog Number:MP00583-2

## Capture Antibody Information

Catalog Number:  
83597-1-PBS

Host:  
Rabbit

Isotype:  
IgG

Purification Method:  
Protein A purification

Clone ID:  
240577A6

Reactivity:  
Human

Immunogen Catalog Number:  
Ag24210

Conjugate:  
Unconjugated

Full name:  
solute carrier family 39 (zinc transporter), member 14

Gene ID:  
23516

## Detection Antibody Information

Catalog Number:  
83597-2-PBS

Host:  
Rabbit

Isotype:  
IgG

Purification Method:  
Protein A purification

Clone ID:  
240577G11

Reactivity:  
Human

GenBank:  
BC015770

Immunogen Catalog Number:  
Ag24210

Conjugate:  
Unconjugated

Full name:  
solute carrier family 39 (zinc transporter), member 14

Gene ID:  
23516

## Applications

Tested Applications:  
Cytometric bead array

Range:  
0.78-100 ng/mL (Cytometric Bead Array)

Recommended Dilutions:  
It is recommended that this reagent should be titrated in each testing system to obtain optimal results.

## Product Information

MP00583-2 targets SLC39A14 in immunoassays as a matched antibody pair. Validated in Cytometric bead array.

Capture antibody: SLC39A14 Recombinant antibody, PBS Only (Capture) 83597-1-PBS (240577A6). 100 µg. Concentration 1 mg/ml.

Detection antibody: SLC39A14 Recombinant antibody, PBS Only (Capture/Detector) 83597-2-PBS (240577G11). 100 µg. Concentration 1 mg/ml.

Alternative SLC39A14 matched antibody pairs: MP00583-1

Unconjugated rabbit recombinant monoclonal antibody pair in PBS only storage buffer at a concentration of 1 mg/mL, ready for conjugation. Created using Proteintech's proprietary in-house recombinant technology. Recombinant production enables unrivalled batch-to-batch consistency, easy scale-up, and future security of supply.

Matched antibody pairs are designed for use in a variety of assays and platforms that require matched antibody pairs.

Antibody use should be optimized for each application and assay.

## Storage

Storage:  
Store at -80°C.  
Storage buffer:  
PBS only

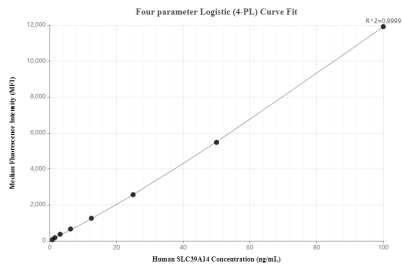
For technical support and original validation data for this product please contact:

T: 1 (888) 4PTGLAB (1-888-478-4522) (toll free in USA), or 1(312) 455-8498 (outside USA)

E: [proteintech@ptglab.com](mailto:proteintech@ptglab.com)  
W: [ptglab.com](http://ptglab.com)

This product is exclusively available under Proteintech Group brand and is not available to purchase from any other manufacturer.

## Selected Validation Data



Cytometric bead array standard curve of MP00583-2, SLC39A14 Recombinant Matched Antibody Pair, PBS Only. Capture antibody: 83597-1-PBS. Detection antibody: 83597-2-PBS. Standard: Ag24210. Range: 0.78-100 ng/mL.