

For Research Use Only

PEBP4 Recombinant Matched Antibody Pair, PBS Only



Catalog Number:MP00574-4

Capture Antibody Information

Catalog Number:

83589-7-PBS

Host:

Rabbit

Isotype:

IgG

Purification Method:

Protein A purification

Clone ID:

240547G9

Reactivity:

human

Immunogen Catalog Number:

Ag9710

Conjugate:

Unconjugated

Full name:

phosphatidylethanolamine-binding protein 4

Gene ID:

157310

Detection Antibody Information

Catalog Number:

83589-6-PBS

Host:

Rabbit

Isotype:

IgG

Purification Method:

Protein A purification

Clone ID:

240547B9

Reactivity:

human

GenBank:

BC020779

Immunogen Catalog Number:

Ag9710

Conjugate:

Unconjugated

Full name:

phosphatidylethanolamine-binding protein 4

Gene ID:

157310

Applications

Tested Applications:

Sandwich ELISA

Range:

0.313-20 ng/mL (Sandwich ELISA)

Recommended Dilutions:

It is recommended that this reagent should be titrated in each testing system to obtain optimal results.

Product Information

MP00574-4 targets PEBP4 in immunoassays as a matched antibody pair. Validated in Sandwich ELISA.

Capture antibody: PEBP4 Recombinant antibody, PBS Only (Capture) 83589-7-PBS (240547G9). 100 µg. Concentration 1 mg/ml.

Detection antibody: PEBP4 Recombinant antibody, PBS Only (Detector) 83589-6-PBS (240547B9). 100 µg. Concentration 1 mg/ml.

Alternative PEBP4 matched antibody pairs: MP00574-1, MP00574-2, MP00574-3

Unconjugated rabbit recombinant monoclonal antibody pair in PBS only storage buffer at a concentration of 1 mg/mL, ready for conjugation. Created using Proteintech's proprietary in-house recombinant technology. Recombinant production enables unrivalled batch-to-batch consistency, easy scale-up, and future security of supply.

Matched antibody pairs are designed for use in a variety of assays and platforms that require matched antibody pairs.

Antibody use should be optimized for each application and assay.

Storage

Storage:

Store at -80°C.

Storage buffer:

PBS only

For technical support and original validation data for this product please contact:

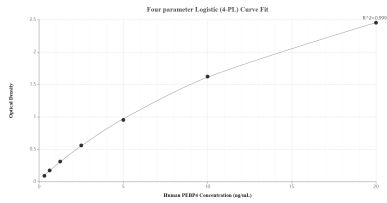
T: 1 (888) 4PTGLAB (1-888-478-4522) (toll free in USA), or 1(312) 455-8498 (outside USA)

E: proteintech@ptglab.com

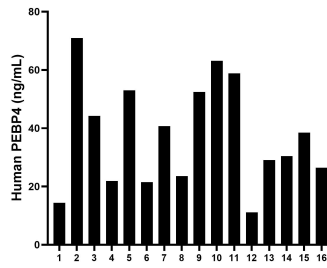
W: ptglab.com

This product is exclusively available under Proteintech Group brand and is not available to purchase from any other manufacturer.

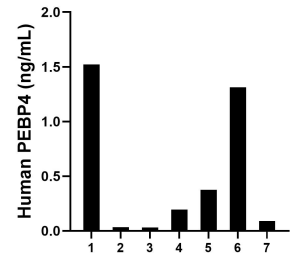
Selected Validation Data



Sandwich ELISA standard curve of MP00574-4, Human PEBP4 Recombinant Matched Antibody Pair - PBS only. 83589-7-PBS was coated to a plate as the capture antibody and incubated with serial dilutions of standard Ag9710. 83589-6-PBS was HRP conjugated as the detection antibody. Range: 0.313-20 ng/mL



Serum of sixteen individual healthy human donors was measured. The PEBP4 concentration of detected samples was determined to be 37.5 ng/mL with a range of 11.15-70.94 ng/mL



Urine of seven individual healthy human donors was measured. The PEBP4 concentration of detected samples was determined to be 0.51 ng/mL with a range of 0.09-1.52 ng/mL