

For Research Use Only

Mouse VEGF Recombinant Matched Antibody Pair, PBS Only



Catalog Number:MP00561-4

Capture Antibody Information

Catalog Number:
84093-2-PBS

Host:
Rabbit

Isotype:
IgG

Purification Method:
Protein A purification

Clone ID:
241391G1

Reactivity:
mouse

Conjugate:
Unconjugated

Full name:
vascular endothelial growth factor A

Gene ID:
22339

Detection Antibody Information

Catalog Number:
84093-5-PBS

Host:
Rabbit

Isotype:
IgG

Purification Method:
Protein A purification

Clone ID:
241391F2

Reactivity:
mouse

GenBank:
NM_001287058

Conjugate:
Unconjugated

Full name:
vascular endothelial growth factor A

Gene ID:
22339

Applications

Tested Applications:
Sandwich ELISA

Range:
7.81-500 pg/mL (Sandwich ELISA)

Recommended Dilutions:
It is recommended that this reagent should be titrated in each testing system to obtain optimal results.

Product Information

MP00561-4 targets VEGF in immunoassays as a matched antibody pair. Validated in Sandwich ELISA.

Capture antibody: Mouse VEGF Recombinant antibody, PBS Only (Capture) 84093-2-PBS (241391G1). 100 µg. Concentration 1 mg/ml.

Detection antibody: Mouse VEGFA Recombinant antibody, PBS Only (Detector) 84093-5-PBS (241391F2). 100 µg. Concentration 1 mg/ml.

Unconjugated rabbit recombinant monoclonal antibody pair in PBS only storage buffer at a concentration of 1 mg/mL, ready for conjugation. Created using Proteintech's proprietary in-house recombinant technology. Recombinant production enables unrivalled batch-to-batch consistency, easy scale-up, and future security of supply.

Matched antibody pairs are designed for use in a variety of assays and platforms that require matched antibody pairs.

Antibody use should be optimized for each application and assay.

Storage

Storage:
Store at -80°C.
Storage buffer:
PBS only

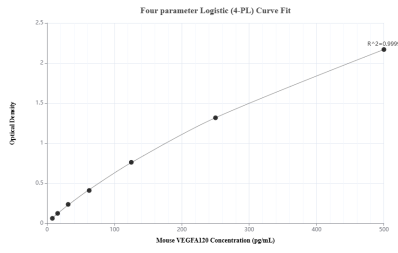
For technical support and original validation data for this product please contact:

T: 1 (888) 4PTGLAB (1-888-478-4522) (toll free in USA), or 1(312) 455-8498 (outside USA)

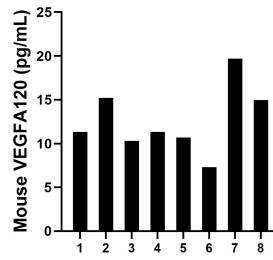
E: proteintech@ptglab.com
W: ptglab.com

This product is exclusively available under Proteintech Group brand and is not available to purchase from any other manufacturer.

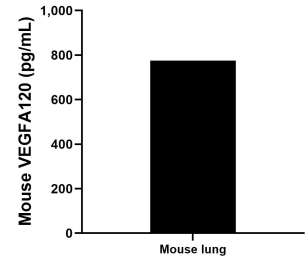
Selected Validation Data



Sandwich ELISA standard curve of MP00561-4, Mouse VEGF Recombinant Matched Antibody Pair - PBS only. 84093-2-PBS was coated to a plate as the capture antibody and incubated with serial dilutions of standard Ego278. 84093-5-PBS was HRP conjugated as the detection antibody. Range: 7.81-500 pg/mL



Serum of eight mice was measured. The mouse VEGFA120 concentration of detected samples was determined to be 12.6 pg/mL with a range of 7.3 - 19.7 pg/mL.



Mouse lung tissue was rinsed with 1X PBS to remove excess blood, homogenized in 20 mL of 1X PBS and stored overnight at ≤ -20 °C. Homogenates were thawed and centrifuged for 5 minutes at 5000 x g. Homogenates were assayed for mouse VEGFA120 and measured 775.6 pg/mL based on a 1.8 mg/mL extract load.