

For Research Use Only

4EBP1 Recombinant Matched Antibody Pair, PBS Only



Catalog Number:MP00559-3

Capture Antibody Information

Catalog Number:
83890-1-PBS
Host:
Rabbit
Isotype:
IgG
Purification Method:
Protein A purification

Clone ID:
241055C6
Reactivity:
human
Immunogen Catalog Number:
Ag5056

Conjugate:
Unconjugated
Full name:
eukaryotic translation initiation factor 4E binding protein 1
Gene ID:
1978

Detection Antibody Information

Catalog Number:
83890-2-PBS
Host:
Rabbit
Isotype:
IgG
Purification Method:
Protein A purification

Clone ID:
241055F11
Reactivity:
human
GenBank:
BC004459
Immunogen Catalog Number:
Ag5056

Conjugate:
Unconjugated
Full name:
eukaryotic translation initiation factor 4E binding protein 1
Gene ID:
1978

Applications

Tested Applications:
Cytometric bead array, Sandwich ELISA

Range:
0.625-80 ng/mL (Cytometric Bead Array)
39.06-2500 pg/mL (Sandwich ELISA)

Recommended Dilutions:
It is recommended that this reagent should be titrated in each testing system to obtain optimal results.

Product Information

MP00559-3 targets 4EBP1 in immunoassays as a matched antibody pair. Validated in Cytometric bead array, Sandwich ELISA.

Capture antibody: 4EBP1 Recombinant antibody, PBS Only (Capture/Detector) 83890-1-PBS (241055C6). 100 µg. Concentration 1 mg/ml.

Detection antibody: 4EBP1 Recombinant antibody, PBS Only (Detector) 83890-2-PBS (241055F11). 100 µg. Concentration 1 mg/ml.

Alternative 4EBP1 matched antibody pairs: MP00559-1, MP00559-2, MP00559-4, MP00559-5

Unconjugated rabbit recombinant monoclonal antibody pair in PBS only storage buffer at a concentration of 1 mg/mL, ready for conjugation. Created using Proteintech's proprietary in-house recombinant technology. Recombinant production enables unrivalled batch-to-batch consistency, easy scale-up, and future security of supply.

Matched antibody pairs are designed for use in a variety of assays and platforms that require matched antibody pairs.

Antibody use should be optimized for each application and assay.

Storage

Storage:
Store at -80°C.
Storage buffer:
PBS only

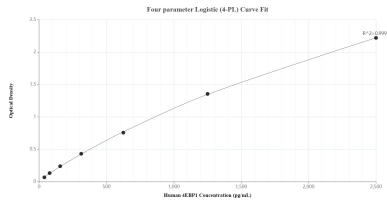
For technical support and original validation data for this product please contact:

T: 1 (888) 4PTGLAB (1-888-478-4522) (toll free in USA), or 1(312) 455-8498 (outside USA)

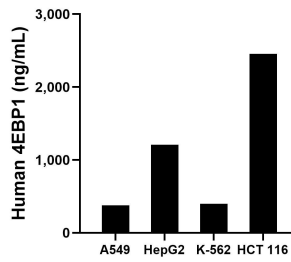
E: proteintech@ptglab.com
W: ptglab.com

This product is exclusively available under Proteintech Group brand and is not available to purchase from any other manufacturer.

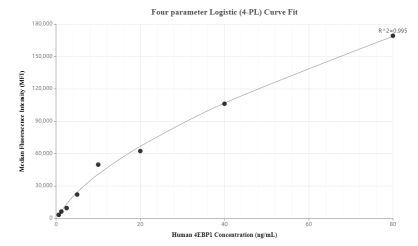
Selected Validation Data



Sandwich ELISA standard curve of MP00559-3, Human 4EBP1 Recombinant Matched Antibody Pair - PBS only. 83890-1-PBS was coated to a plate as the capture antibody and incubated with serial dilutions of standard Ag5056. 83890-2-PBS was HRP conjugated as the detection antibody. Range: 39.06-2500 pg/mL



The mean 4EBP1 concentration was determined to be 375.9 ng/mL in A549 cell extract based on a 3.0 mg/mL extract load, 1,210.9 ng/mL in HepG2 cell extract based on a 8.5 mg/mL extract load, 396.7 ng/mL in K-562 cell extract based on a 5.2 mg/mL extract load and 2,456.3 ng/mL in HCT 116 cell extract based on a 6.1 mg/mL extract load.



Cytometric bead array standard curve of MP00559-3, 4EBP1 Recombinant Matched Antibody Pair, PBS Only. Capture antibody: 83890-1-PBS. Detection antibody: 83890-2-PBS. Standard: Ag5056. Range: 0.625-80 ng/mL