

For Research Use Only

# GLIPR1L1 Recombinant Matched Antibody Pair, PBS Only



Catalog Number:MP00557-1

## Capture Antibody Information

Catalog Number:

83584-2-PBS

Host:

Rabbit

Isotype:

IgG

Purification Method:

Protein A purification

Clone ID:

240594F4

Reactivity:

Human

Immunogen Catalog Number:

Ag14852

Conjugate:

Unconjugated

Full name:

GLI pathogenesis-related 1 like 1

Gene ID:

256710

## Detection Antibody Information

Catalog Number:

83584-3-PBS

Host:

Rabbit

Isotype:

IgG

Purification Method:

Protein A purification

Clone ID:

240594D10

Reactivity:

Human

GenBank:

BC014603

Immunogen Catalog Number:

Ag14852

Conjugate:

Unconjugated

Full name:

GLI pathogenesis-related 1 like 1

Gene ID:

256710

## Applications

Tested Applications:

Cytometric bead array

Range:

0.78-100 ng/mL (Cytometric Bead Array)

Recommended Dilutions:

It is recommended that this reagent should be titrated in each testing system to obtain optimal results.

## Product Information

MP00557-1 targets GLIPR1L1 in immunoassays as a matched antibody pair. Validated in Cytometric bead array.

Capture antibody: GLIPR1L1 Recombinant antibody, PBS Only (Capture) 83584-2-PBS (240594F4). 100 µg. Concentration 1 mg/ml.

Detection antibody: GLIPR1L1 Recombinant antibody, PBS Only (Detector) 83584-3-PBS (240594D10). 100 µg. Concentration 1 mg/ml.

Alternative GLIPR1L1 matched antibody pairs: MP00557-2

Unconjugated rabbit recombinant monoclonal antibody pair in PBS only storage buffer at a concentration of 1 mg/mL, ready for conjugation. Created using Proteintech's proprietary in-house recombinant technology.

Recombinant production enables unrivalled batch-to-batch consistency, easy scale-up, and future security of supply.

Matched antibody pairs are designed for use in a variety of assays and platforms that require matched antibody pairs.

Antibody use should be optimized for each application and assay.

## Storage

Storage:

Store at -80°C.

Storage buffer:

PBS only

For technical support and original validation data for this product please contact:

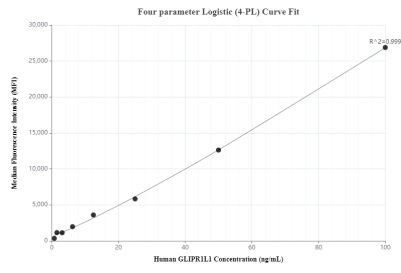
T: 1 (888) 4PTGLAB (1-888-478-4522) (toll free in USA), or 1(312) 455-8498 (outside USA)

E: [proteintech@ptglab.com](mailto:proteintech@ptglab.com)

W: [ptglab.com](http://ptglab.com)

This product is exclusively available under Proteintech Group brand and is not available to purchase from any other manufacturer.

## Selected Validation Data



Cytometric bead array standard curve of MP00557-1, GLP1R1L1 Recombinant Matched Antibody Pair, PBS Only. Capture antibody: 83584-2-PBS. Detection antibody: 83584-3-PBS. Standard: Ag14852. Range: 0.78-100 ng/mL.