

For Research Use Only

# Mouse GSDMD Recombinant Matched Antibody Pair, PBS Only



Catalog Number:MP00534-2

## Capture Antibody Information

Catalog Number:  
83562-2-PBS

Host:  
Rabbit

Isotype:  
IgG

Purification Method:  
Protein A purification

Clone ID:  
240548G12

Reactivity:  
mouse

Immunogen Catalog Number:  
Ag34905

Conjugate:  
Unconjugated

Full name:  
gasdermin D

Gene ID:  
69146

## Detection Antibody Information

Catalog Number:  
83562-3-PBS

Host:  
Rabbit

Isotype:  
IgG

Purification Method:  
Protein A purification

Clone ID:  
240548B10

Reactivity:  
mouse

GenBank:  
BC029813

Immunogen Catalog Number:  
Ag34905

Conjugate:  
Unconjugated

Full name:  
gasdermin D

Gene ID:  
69146

## Applications

Tested Applications:

Cytometric bead array, Sandwich  
ELISA

Range:

0.625-80 ng/mL (Cytometric Bead  
Array)  
0.16-10 ng/mL (Sandwich ELISA)

Recommended Dilutions:

It is recommended that this reagent  
should be titrated in each testing  
system to obtain optimal results.

## Product Information

MP00534-2 targets GSDMD in immunoassays as a matched antibody pair. Validated in Cytometric bead array, Sandwich ELISA.

Capture antibody: Mouse GSDMD Recombinant antibody, PBS Only (Capture) 83562-2-PBS (240548G12). 100 µg. Concentration 1 mg/ml.

Detection antibody: Mouse GSDMD Recombinant antibody, PBS Only (Capture/Detector) 83562-3-PBS (240548B10). 100 µg. Concentration 1 mg/ml.

Alternative GSDMD matched antibody pairs: MP00534-1, MP00534-3

Unconjugated rabbit recombinant monoclonal antibody pair in PBS only storage buffer at a concentration of 1 mg/mL, ready for conjugation. Created using Proteintech's proprietary in-house recombinant technology. Recombinant production enables unrivalled batch-to-batch consistency, easy scale-up, and future security of supply.

Matched antibody pairs are designed for use in a variety of assays and platforms that require matched antibody pairs.

Antibody use should be optimized for each application and assay.

## Storage

Storage:

Store at -80°C.

Storage buffer:

PBS only

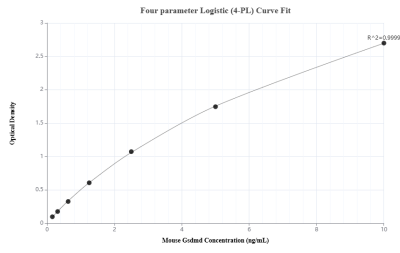
For technical support and original validation data for this product please contact:

T: 1 (888) 4PTGLAB (1-888-478-4522) (toll free  
in USA), or 1(312) 455-8498 (outside USA)

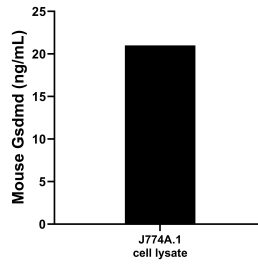
E: [proteintech@ptglab.com](mailto:proteintech@ptglab.com)  
W: [ptglab.com](http://ptglab.com)

This product is exclusively available under Proteintech Group brand and is not available to purchase from any other manufacturer.

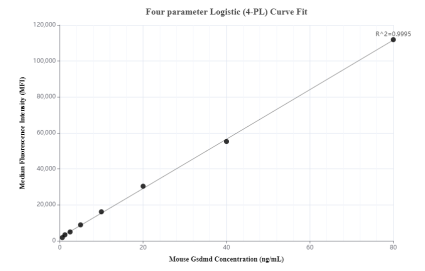
## Selected Validation Data



Sandwich ELISA standard curve of MP00534-2, Mouse Gsdmd Recombinant Matched Antibody Pair - PBS only. 83562-2-PBS was coated to a plate as the capture antibody and incubated with serial dilutions of standard Ag34905. 83562-3-PBS was HRP conjugated as the detection antibody. Range: 0.16-10 ng/mL



J774A.1 cell lysate was measured. The mouse Gsdmd concentration of detected samples was determined to be 21.0 ng/mL, based on a 3.4 mg/mL lysate load.



Cytometric bead array standard curve of MP00534-2, MOUSE GSDMD Recombinant Matched Antibody Pair, PBS Only. Capture antibody: 83562-2-PBS. Detection antibody: 83562-3-PBS. Standard: Ag34905. Range: 0.625-80 ng/mL