

For Research Use Only

# Mouse IL-2 Recombinant Matched Antibody Pair, PBS Only



Catalog Number:MP00533-3

## Capture Antibody Information

**Catalog Number:**  
98055-1-PBS  
**Host:**  
Rabbit  
**Isotype:**  
IgG  
**Purification Method:**  
Protein A purification

**Clone ID:**  
240358A2  
**Reactivity:**  
mouse

**Conjugate:**  
Unconjugated  
**Full name:**  
interleukin 2  
**Gene ID:**  
16183

## Detection Antibody Information

**Catalog Number:**  
83547-1-PBS  
**Host:**  
Rabbit  
**Isotype:**  
IgG  
**Purification Method:**  
Protein A purification

**Clone ID:**  
240358A4  
**Reactivity:**  
mouse  
**GenBank:**  
NM\_008366

**Conjugate:**  
Unconjugated  
**Full name:**  
interleukin 2  
**Gene ID:**  
16183

## Applications

**Tested Applications:**  
Sandwich ELISA

**Range:**  
6.25-400 pg/mL (Sandwich ELISA)

**Recommended Dilutions:**  
It is recommended that this reagent should be titrated in each testing system to obtain optimal results.

## Product Information

MP00533-3 targets IL-2 in immunoassays as a matched antibody pair. Validated in Sandwich ELISA.

Capture antibody: Anti-Mouse IL-2 Rabbit Recombinant Antibody, PBS Only 98055-1-PBS (240358A2). 100 µg. Concentration 1 mg/ml.

Detection antibody: Mouse IL-2 Recombinant antibody, PBS Only (Capture/Detector) 83547-1-PBS (240358A4). 100 µg. Concentration 1 mg/ml.

Alternative IL-2 matched antibody pairs: MP00533-1, MP00533-2

Unconjugated rabbit recombinant monoclonal antibody pair in PBS only storage buffer at a concentration of 1 mg/mL, ready for conjugation. Created using Proteintech's proprietary in-house recombinant technology. Recombinant production enables unrivalled batch-to-batch consistency, easy scale-up, and future security of supply.

Matched antibody pairs are designed for use in a variety of assays and platforms that require matched antibody pairs.

Antibody use should be optimized for each application and assay.

## Storage

**Storage:**  
Store at -80°C.  
**Storage buffer:**  
PBS only

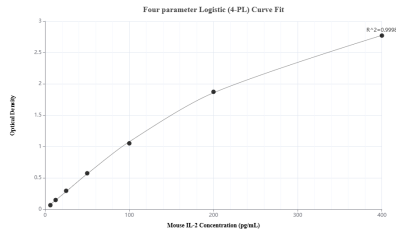
For technical support and original validation data for this product please contact:

T: 1 (888) 4PTGLAB (1-888-478-4522) (toll free in USA), or 1(312) 455-8498 (outside USA)

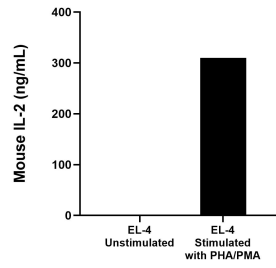
E: [proteintech@ptglab.com](mailto:proteintech@ptglab.com)  
W: [ptglab.com](http://ptglab.com)

**This product is exclusively available under Proteintech Group brand and is not available to purchase from any other manufacturer.**

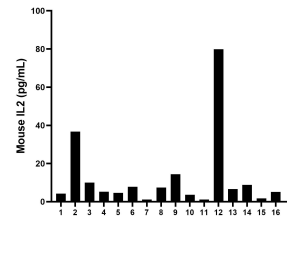
## Selected Validation Data



Sandwich ELISA standard curve of MP00533-3, mouse IL-2 Recombinant Matched Antibody Pair - PBS only. 98055-1-PBS was coated to a plate as the capture antibody and incubated with serial dilutions of standard Eg0762. 83547-1-PBS was HRP conjugated as the detection antibody. Range: 6.25-400 pg/mL



EL-4 mouse lymphoblast cells ( $1 \times 10^6$  cells/mL) were cultured for 3 days in DMEM supplemented with 10% fetal bovine serum and stimulated with  $10 \mu\text{g/mL}$  PHA and  $10 \text{ ng/mL}$  PMA. The mean mouse IL-2 concentration was determined to be  $16.1 \text{ pg/mL}$  in unstimulated EL-4,  $309.9 \text{ ng/mL}$  in PHA and PMA stimulated EL-4 supernatant.



Serum of sixteen mice was measured. The mouse IL-2 concentration was determined to be  $2.27 \text{ pg/mL}$  with a range of  $1.1\text{-}79.9 \text{ pg/mL}$ .