

For Research Use Only

# CD5 Recombinant Matched Antibody Pair, PBS Only



Catalog Number:MP00525-4

## Capture Antibody Information

Catalog Number:  
83543-2-PBS

Host:  
Rabbit

Isotype:  
IgG

Purification Method:  
Protein A purification

Clone ID:  
240428G6

Reactivity:  
human

Conjugate:  
Unconjugated

Full name:  
CD5 molecule

Gene ID:  
921

## Detection Antibody Information

Catalog Number:  
83543-9-PBS

Host:  
Rabbit

Isotype:  
IgG

Purification Method:  
Protein A purification

Clone ID:  
240428A3

Reactivity:  
human

GenBank:  
NM\_014207.4

Conjugate:  
Unconjugated

Full name:  
CD5 molecule

Gene ID:  
921

## Applications

Tested Applications:  
Sandwich ELISA

Range:  
15.6-1000 pg/mL (Sandwich ELISA)

Recommended Dilutions:  
It is recommended that this reagent should be titrated in each testing system to obtain optimal results.

## Product Information

MP00525-4 targets CD5 in immunoassays as a matched antibody pair. Validated in Sandwich ELISA.

Capture antibody: CD5 Recombinant antibody, PBS Only (Capture) 83543-2-PBS (240428G6). 100 µg. Concentration 1 mg/ml.

Detection antibody: CD5 Recombinant antibody, PBS Only (Detector) 83543-9-PBS (240428A3). 100 µg. Concentration 1 mg/ml.

Alternative CD5 matched antibody pairs: MP00448-1, MP00448-2, MP00448-3, MP00525-1, MP00525-2, MP00525-3, MP50028-1

Unconjugated rabbit recombinant monoclonal antibody pair in PBS only storage buffer at a concentration of 1 mg/mL, ready for conjugation. Created using Proteintech's proprietary in-house recombinant technology. Recombinant production enables unrivalled batch-to-batch consistency, easy scale-up, and future security of supply.

Matched antibody pairs are designed for use in a variety of assays and platforms that require matched antibody pairs.

Antibody use should be optimized for each application and assay.

## Storage

Storage:  
Store at -80°C.  
Storage buffer:  
PBS only

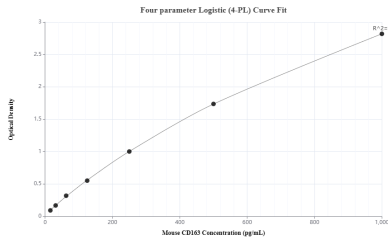
For technical support and original validation data for this product please contact:

T: 1 (888) 4PTGLAB (1-888-478-4522) (toll free in USA), or 1(312) 455-8498 (outside USA)

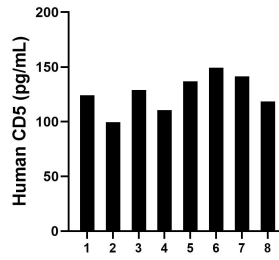
E: [proteintech@ptglab.com](mailto:proteintech@ptglab.com)  
W: [ptglab.com](http://ptglab.com)

This product is exclusively available under Proteintech Group brand and is not available to purchase from any other manufacturer.

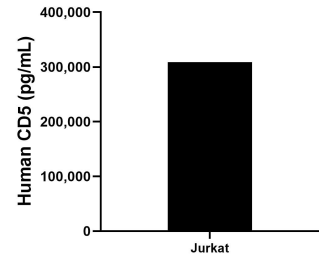
## Selected Validation Data



Sandwich ELISA standard curve of MP00525-4, CD5 Recombinant Matched Antibody Pair - PBS only. 83543-2-PBS was coated to a plate as the capture antibody and incubated with serial dilutions of standard Eg1119. 83543-9-PBS was HRP conjugated as the detection antibody. Range: 15.6-1000 pg/mL



Serum of eight individual healthy human donors was measured. The human CD5 concentration of detected samples was determined to be 126.14 pg/mL with a range of 99.4 -149.2 pg/mL



The mean human CD5 concentration was determined to be 308,651.0 pg/mL in Jurkat cell extract based on a 3.6 mg/mL extract load.