

For Research Use Only

PSMD1 Recombinant Matched Antibody Pair, PBS Only



Catalog Number:MP00519-3

Capture Antibody Information

Catalog Number:
83521-2-PBS
Host:
Rabbit
Isotype:
IgG
Purification Method:
Protein A purification

Clone ID:
240458B3
Reactivity:
human, mouse, rat
Immunogen Catalog Number:
Ag12009

Conjugate:
Unconjugated
Full name:
proteasome (prosome, macropain)
26S subunit, non-ATPase, 1
Gene ID:
5707

Detection Antibody Information

Catalog Number:
83521-5-PBS
Host:
Rabbit
Isotype:
IgG
Purification Method:
Protein A purification

Clone ID:
240458C4
Reactivity:
human
GenBank:
BC094720
Immunogen Catalog Number:
Ag12009

Conjugate:
Unconjugated
Full name:
proteasome (prosome, macropain)
26S subunit, non-ATPase, 1
Gene ID:
5707

Applications

Tested Applications:
Sandwich ELISA

Range:
78.1-5000 pg/mL (Sandwich ELISA)

Recommended Dilutions:
It is recommended that this reagent should be titrated in each testing system to obtain optimal results.

Product Information

MP00519-3 targets PSMD1 in immunoassays as a matched antibody pair. Validated in Sandwich ELISA.

Capture antibody: PSMD1 Recombinant antibody, PBS Only (Capture/Detector) 83521-2-PBS (240458B3). 100 µg. Concentration 1 mg/ml.

Detection antibody: PSMD1 Recombinant antibody, PBS Only (Detector) 83521-5-PBS (240458C4). 100 µg. Concentration 1 mg/ml.

Alternative PSMD1 matched antibody pairs: MP00519-1, MP00519-2

Unconjugated rabbit recombinant monoclonal antibody pair in PBS only storage buffer at a concentration of 1 mg/mL, ready for conjugation. Created using Proteintech's proprietary in-house recombinant technology. Recombinant production enables unrivalled batch-to-batch consistency, easy scale-up, and future security of supply.

Matched antibody pairs are designed for use in a variety of assays and platforms that require matched antibody pairs.

Antibody use should be optimized for each application and assay.

Storage

Storage:
Store at -80°C.
Storage buffer:
PBS only

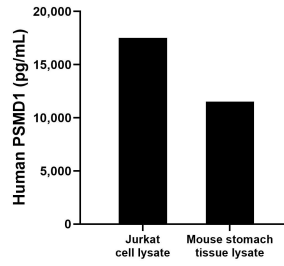
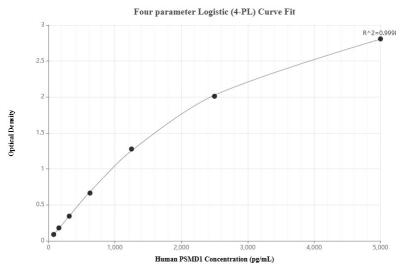
For technical support and original validation data for this product please contact:

T: 1 (888) 4PTGLAB (1-888-478-4522) (toll free in USA), or 1(312) 455-8498 (outside USA)

E: proteintech@ptglab.com
W: ptglab.com

This product is exclusively available under Proteintech Group brand and is not available to purchase from any other manufacturer.

Selected Validation Data



Sandwich ELISA standard curve of MP00519-3, Human PSMD1 Recombinant Matched Antibody Pair - PBS only. 83521-2-PBS was coated to a plate as the capture antibody and incubated with serial dilutions of standard Ag12009. 83521-5-PBS was HRP conjugated as the detection antibody. Range: 78.1-5000 pg/mL

Mouse stomach tissue lysate and Jurkat cell lysate were measured. The human PSMD1 concentration of detected samples was determined to be 11,510.8 pg/mL in mouse stomach lysate (based on a 4.0 mg/mL extract load) and 17,515.2 pg/mL in Jurkat cell lysate (based on a 3.4 mg/mL extract load).