

# Integrin beta-5 Recombinant Matched Antibody Pair, PBS Only

Catalog Number:MP00512-4

## Capture Antibody Information

**Catalog Number:**

83514-3-PBS

**Host:**

Rabbit

**Isotype:**

IgG

**Purification Method:**

Protein A purification

**Clone ID:**

240401G11

**Reactivity:**

human

**Immunogen Catalog Number:**

Ag29783

**Conjugate:**

Unconjugated

**Full name:**

integrin, beta 5

**Gene ID:**

3693

## Detection Antibody Information

**Catalog Number:**

83514-1-PBS

**Host:**

Rabbit

**Isotype:**

IgG

**Purification Method:**

Protein A purification

**Clone ID:**

240401C12

**Reactivity:**

human

**GenBank:**

BC006541

**Immunogen Catalog Number:**

Ag29783

**Conjugate:**

Unconjugated

**Full name:**

integrin, beta 5

**Gene ID:**

3693

## Applications

**Tested Applications:**

Sandwich ELISA

**Range:**

9.766-625 pg/mL (Sandwich ELISA)

**Recommended Dilutions:**

It is recommended that this reagent should be titrated in each testing system to obtain optimal results.

## Product Information

MP00512-4 targets Integrin beta-5 in immunoassays as a matched antibody pair. Validated in Sandwich ELISA.

Capture antibody: Integrin beta-5 Recombinant antibody, PBS Only (Capture/Detector) 83514-3-PBS (240401G11). 100 µg. Concentration 1 mg/ml.

Detection antibody: Integrin beta-5 Recombinant antibody, PBS Only (Detector) 83514-1-PBS (240401C12). 100 µg. Concentration 1 mg/ml.

Alternative Integrin beta-5 matched antibody pairs: MP00512-1, MP00512-2, MP00512-3

Unconjugated rabbit recombinant monoclonal antibody pair in PBS only storage buffer at a concentration of 1 mg/mL, ready for conjugation. Created using Proteintech's proprietary in-house recombinant technology.

Recombinant production enables unrivalled batch-to-batch consistency, easy scale-up, and future security of supply.

Matched antibody pairs are designed for use in a variety of assays and platforms that require matched antibody pairs.

Antibody use should be optimized for each application and assay.

## Storage

**Storage:**

Store at -80°C.

**Storage buffer:**

PBS only

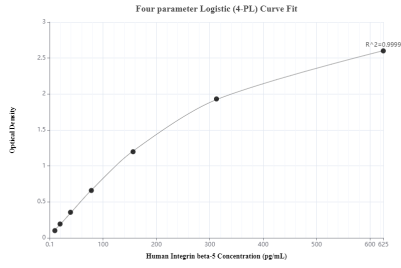
For technical support and original validation data for this product please contact:

T: 1 (888) 4PTGLAB (1-888-478-4522) (toll free  
in USA), or 1(312) 455-8498 (outside USA)

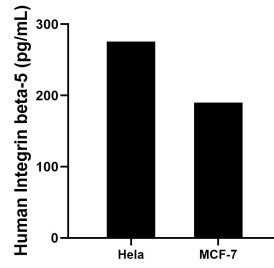
E: proteintech@ptglab.com  
W: ptglab.com

**This product is exclusively available under Proteintech Group brand and is not available to purchase from any other manufacturer.**

## Selected Validation Data



Sandwich ELISA standard curve of MP00512-4, Integrin beta-5 Recombinant Matched Antibody Pair, PBS Only. Capture antibody: 83514-3-PBS. Detection antibody: 83514-1-PBS. Standard: Ag29783. Range: 9.766-625 pg/mL



The mean Integrin beta-5 concentration was determined to be 275.71 pg/mL in HeLa cell extract based on a 2.8 mg/mL extract load and 190.06 pg/mL in MCF-7 cell extract based on a 3.1 mg/mL extract load.