

For Research Use Only

SLC24A2 Recombinant Matched Antibody Pair, PBS Only



Catalog Number:MP00501-3

Capture Antibody Information

Catalog Number:
83529-2-PBS

Host:
Rabbit

Isotype:
IgG

Purification Method:
Protein A purification

Clone ID:
240467F8

Reactivity:
Human

Immunogen Catalog Number:
Ag35294

Conjugate:
Unconjugated

Full name:
solute carrier family 24
(sodium/potassium/calcium
exchanger), member 2

Gene ID:
25769

Detection Antibody Information

Catalog Number:
83529-4-PBS

Host:
Rabbit

Isotype:
IgG

Purification Method:
Protein A purification

Clone ID:
240467H3

Reactivity:
Human

GenBank:
NM_020344

Immunogen Catalog Number:
Ag35294

Conjugate:
Unconjugated

Full name:
solute carrier family 24
(sodium/potassium/calcium
exchanger), member 2

Gene ID:
25769

Applications

Tested Applications:
Cytometric bead array

Range:
0.78-50 ng/mL (Cytometric Bead
Array)

Recommended Dilutions:
It is recommended that this reagent
should be titrated in each testing
system to obtain optimal results.

Product Information

MP00501-3 targets SLC24A2 in immunoassays as a matched antibody pair. Validated in Cytometric bead array.

Capture antibody: SLC24A2 Recombinant antibody, PBS Only (Capture/Detector) 83529-2-PBS (240467F8). 100 µg. Concentration 1 mg/ml.

Detection antibody: SLC24A2 Recombinant antibody, PBS Only (Detector) 83529-4-PBS (240467H3). 100 µg. Concentration 1 mg/ml.

Alternative SLC24A2 matched antibody pairs: MP00501-1, MP00501-2

Unconjugated rabbit recombinant monoclonal antibody pair in PBS only storage buffer at a concentration of 1 mg/mL, ready for conjugation. Created using Proteintech's proprietary in-house recombinant technology. Recombinant production enables unrivalled batch-to-batch consistency, easy scale-up, and future security of supply.

Matched antibody pairs are designed for use in a variety of assays and platforms that require matched antibody pairs.

Antibody use should be optimized for each application and assay.

Storage

Storage:
Store at -80°C.
Storage buffer:
PBS only

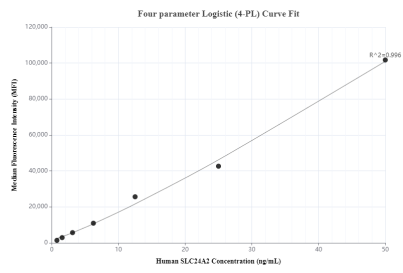
For technical support and original validation data for this product please contact:

T: 1 (888) 4PTGLAB (1-888-478-4522) (toll free
in USA), or 1(312) 455-8498 (outside USA)

E: proteintech@ptglab.com
W: ptglab.com

This product is exclusively available under Proteintech Group brand and is not available to purchase from any other manufacturer.

Selected Validation Data



Cytometric bead array standard curve of MP00501-3, SLC24A2 Recombinant Matched Antibody Pair, PBS Only. Capture antibody: 83529-2-PBS. Detection antibody: 83529-4-PBS. Standard: Ag35294. Range: 0.78-50 ng/mL.