

For Research Use Only

RPP30 Recombinant Matched Antibody Pair, PBS Only



Catalog Number:MP00472-1

Capture Antibody Information

Catalog Number:
83481-2-PBS

Host:
Rabbit

Isotype:
IgG

Purification Method:
Protein A purification

Clone ID:
240468F5

Reactivity:
human

Immunogen Catalog Number:
Ag8600

Conjugate:
Unconjugated

Full name:
ribonuclease P/MRP 30kDa subunit

Gene ID:
10556

Detection Antibody Information

Catalog Number:
83481-5-PBS

Host:
Rabbit

Isotype:
IgG

Purification Method:
Protein A purification

Clone ID:
240468E4

Reactivity:
human, mouse

GenBank:
BC006991

Immunogen Catalog Number:
Ag8600

Conjugate:
Unconjugated

Full name:
ribonuclease P/MRP 30kDa subunit

Gene ID:
10556

Applications

Tested Applications:
Cytometric bead array, Sandwich ELISA

Range:
0.78-100 ng/mL (Cytometric Bead Array)
3.13-200 ng/mL (Sandwich ELISA)

Recommended Dilutions:
It is recommended that this reagent should be titrated in each testing system to obtain optimal results.

Product Information

MP00472-1 targets RPP30 in immunoassays as a matched antibody pair. Validated in Cytometric bead array, Sandwich ELISA.

Capture antibody: RPP30 Recombinant antibody, PBS Only (Capture/Detector) 83481-2-PBS (240468F5). 100 µg. Concentration 1 mg/ml.

Detection antibody: RPP30 Recombinant antibody, PBS Only (Detector) 83481-5-PBS (240468E4). 100 µg. Concentration 1 mg/ml.

Alternative RPP30 matched antibody pairs: MP00472-2, MP00472-3

Unconjugated rabbit recombinant monoclonal antibody pair in PBS only storage buffer at a concentration of 1 mg/mL, ready for conjugation. Created using Proteintech's proprietary in-house recombinant technology. Recombinant production enables unrivalled batch-to-batch consistency, easy scale-up, and future security of supply.

Matched antibody pairs are designed for use in a variety of assays and platforms that require matched antibody pairs.

Antibody use should be optimized for each application and assay.

Storage

Storage:
Store at -80°C.
Storage buffer:
PBS only

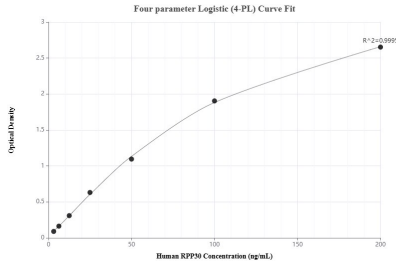
For technical support and original validation data for this product please contact:

T: 1 (888) 4PTGLAB (1-888-478-4522) (toll free in USA), or 1(312) 455-8498 (outside USA)

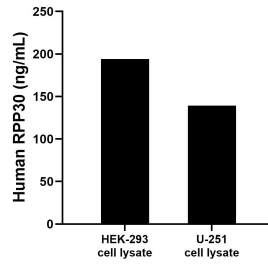
E: proteintech@ptglab.com
W: ptglab.com

This product is exclusively available under Proteintech Group brand and is not available to purchase from any other manufacturer.

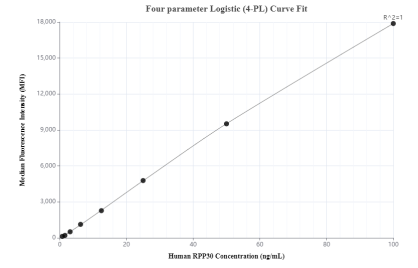
Selected Validation Data



Sandwich ELISA standard curve of MP00472-1, Human RPP30 Recombinant Matched Antibody Pair - PBS only. 83481-2-PBS was coated to a plate as the capture antibody and incubated with serial dilutions of standard Ag8600. 83481-5-PBS was HRP conjugated as the detection antibody. Range: 3.13-200 ng/mL



HEK-293 and U-251 cell lysate were measured. The human RPP30 concentration of detected samples was determined to be 194.20 ng/mL (based on a 1.2 mg/mL extract load) in HEK-293 cell lysate and 139.41 ng/mL (based on a 3.3 mg/mL extract load) in U-251 cell lysate.



Cytometric bead array standard curve of MP00472-1, RPP30 Recombinant Matched Antibody Pair, PBS Only. Capture antibody: 83481-2-PBS. Detection antibody: 83481-5-PBS. Standard: Ag8600. Range: 0.78-100 ng/mL