

# TFF1 Recombinant Matched Antibody Pair, PBS Only

Catalog Number:MP00469-2

## Capture Antibody Information

**Catalog Number:**

83467-1-PBS

**Host:**

Rabbit

**Isotype:**

IgG

**Purification Method:**

Protein A purification

**Clone ID:**

240424E6

**Reactivity:**

human

**Immunogen Catalog Number:**

Ag4541

**Conjugate:**

Unconjugated

**Full name:**

trefoil factor 1

**Gene ID:**

7031

## Detection Antibody Information

**Catalog Number:**

83467-3-PBS

**Host:**

Rabbit

**Isotype:**

IgG

**Purification Method:**

Protein A purification

**Clone ID:**

240424H4

**Reactivity:**

human

**GenBank:**

BC032811

**Immunogen Catalog Number:**

Ag4541

**Conjugate:**

Unconjugated

**Full name:**

trefoil factor 1

**Gene ID:**

7031

## Applications

**Tested Applications:**

Sandwich ELISA

**Range:**

31.25-2000 pg/mL (Sandwich ELISA)

**Recommended Dilutions:**

It is recommended that this reagent should be titrated in each testing system to obtain optimal results.

## Product Information

MP00469-2 targets TFF1 in immunoassays as a matched antibody pair. Validated in Sandwich ELISA.

Capture antibody: TFF1 Recombinant antibody, PBS Only (Capture/Detector) 83467-1-PBS (240424E6). 100 µg. Concentration 1 mg/ml.

Detection antibody: TFF1 Recombinant antibody, PBS Only (Detector) 83467-3-PBS (240424H4). 100 µg. Concentration 1 mg/ml.

Alternative TFF1 matched antibody pairs: MP00469-1, MP50027-1

Unconjugated rabbit recombinant monoclonal antibody pair in PBS only storage buffer at a concentration of 1 mg/mL, ready for conjugation. Created using Proteintech's proprietary in-house recombinant technology. Recombinant production enables unrivalled batch-to-batch consistency, easy scale-up, and future security of supply.

Matched antibody pairs are designed for use in a variety of assays and platforms that require matched antibody pairs.

Antibody use should be optimized for each application and assay.

## Storage

**Storage:**

Store at -80°C.

**Storage buffer:**

PBS only

For technical support and original validation data for this product please contact:

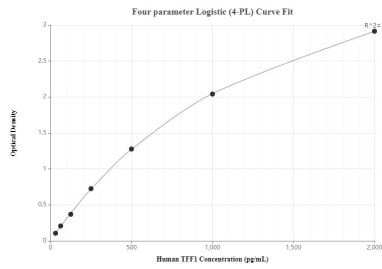
T: 1 (888) 4PTGLAB (1-888-478-4522) (toll free in USA), or 1(312) 455-8498 (outside USA)

E: [proteintech@ptglab.com](mailto:proteintech@ptglab.com)

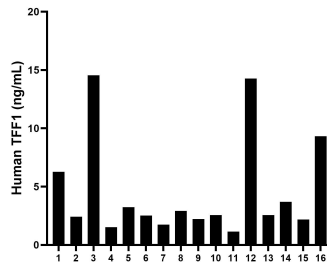
W: [ptglab.com](http://ptglab.com)

**This product is exclusively available under Proteintech Group brand and is not available to purchase from any other manufacturer.**

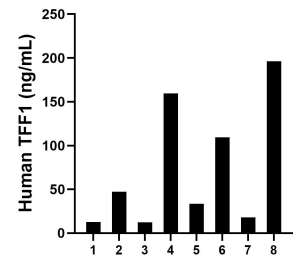
## Selected Validation Data



Sandwich ELISA standard curve of MP00469-2, TFF1 Recombinant Matched Antibody Pair - PBS only. 83467-1-PBS was coated to a plate as the capture antibody and incubated with serial dilutions of standard Ag4541. 83467-3-PBS was HRP conjugated as the detection antibody. Range: 31.25-2000 pg/mL



Serum of sixteen individual healthy human donors was measured. The TFF1 concentration of detected samples was determined to be 4.6 ng/mL with a range of 1.1 - 14.6 ng/mL.



Urine of eight individual healthy human donors was measured. The TFF1 concentration of detected samples was determined to be 73.7 ng/mL with a range of 12.4 - 196.2 ng/mL.