

For Research Use Only

MAGEA3 Recombinant Matched Antibody Pair, PBS Only



Catalog Number:MP00467-4

Capture Antibody Information

Catalog Number:

83480-6-PBS

Host:

Rabbit

Isotype:

IgG

Purification Method:

Protein A purification

Clone ID:

240435F6

Reactivity:

human

Immunogen Catalog Number:

Ag0265

Conjugate:

Unconjugated

Full name:

melanoma antigen family A, 3

Gene ID:

4102

Detection Antibody Information

Catalog Number:

83480-3-PBS

Host:

Rabbit

Isotype:

IgG

Purification Method:

Protein A purification

Clone ID:

240435F8

Reactivity:

human

GenBank:

BC000340

Immunogen Catalog Number:

Ag0265

Conjugate:

Unconjugated

Full name:

melanoma antigen family A, 3

Gene ID:

4102

Applications

Tested Applications:

Sandwich ELISA

Range:

39.1-2500 pg/mL (Sandwich ELISA)

Recommended Dilutions:

It is recommended that this reagent should be titrated in each testing system to obtain optimal results.

Product Information

MP00467-4 targets MAGEA3 in immunoassays as a matched antibody pair. Validated in Sandwich ELISA.

Capture antibody: MAGEA3 Recombinant antibody, PBS Only (Capture) 83480-6-PBS (240435F6). 100 µg. Concentration 1 mg/ml.

Detection antibody: MAGEA3 Recombinant antibody, PBS Only (Capture/Detector) 83480-3-PBS (240435F8). 100 µg. Concentration 1 mg/ml.

Alternative MAGEA3 matched antibody pairs: MP00467-1, MP00467-2, MP00467-3

Unconjugated rabbit recombinant monoclonal antibody pair in PBS only storage buffer at a concentration of 1 mg/mL, ready for conjugation. Created using Proteintech's proprietary in-house recombinant technology.

Recombinant production enables unrivalled batch-to-batch consistency, easy scale-up, and future security of supply.

Matched antibody pairs are designed for use in a variety of assays and platforms that require matched antibody pairs.

Antibody use should be optimized for each application and assay.

Storage

Storage:

Store at -80°C.

Storage buffer:

PBS only

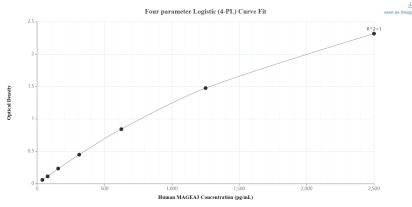
For technical support and original validation data for this product please contact:

T: 1 (888) 4PTGLAB (1-888-478-4522) (toll free in USA), or 1(312) 455-8498 (outside USA)

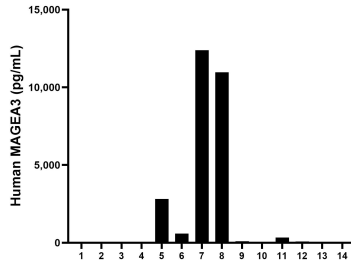
E: proteintech@ptglab.com
W: ptglab.com

This product is exclusively available under Proteintech Group brand and is not available to purchase from any other manufacturer.

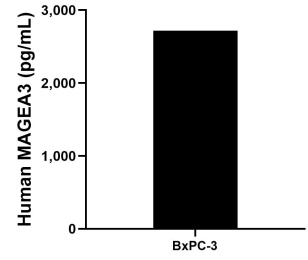
Selected Validation Data



Sandwich ELISA standard curve of MP00467-4, Human MAGEA3 Recombinant Matched Antibody Pair - PBS only. 83480-6-PBS was coated to a plate as the capture antibody and incubated with serial dilutions of standard Ag0265. 83480-3-PBS was HRP conjugated as the detection antibody. Range: 39.1-2500 pg/mL.



Serum of fourteen individual healthy human donors was measured. The human MAGEA3 concentration of detected samples was determined to be 1,950.7 pg/mL with a range of ND - 12,398.4 pg/mL.



The mean human MAGEA3 concentration was determined to be 2,719.3 pg/mL in BxPC-3 cell extract based on a 5.4 mg/mL extract load.