

For Research Use Only



# TREM2 Recombinant Matched Antibody Pair, PBS Only

Catalog Number:MP00440-4

## Capture Antibody Information

**Catalog Number:**  
83438-5-PBS  
**Host:**  
Rabbit  
**Isotype:**  
IgG  
**Purification Method:**  
Protein A purification

**Clone ID:**  
240384G3  
**Reactivity:**  
human

**Conjugate:**  
Unconjugated  
**Full name:**  
triggering receptor expressed on myeloid cells 2  
**Gene ID:**  
54209

## Detection Antibody Information

**Catalog Number:**  
83438-7-PBS  
**Host:**  
Rabbit  
**Isotype:**  
IgG  
**Purification Method:**  
Protein A purification

**Clone ID:**  
240384F6  
**Reactivity:**  
human  
**GenBank:**  
BC032362

**Conjugate:**  
Unconjugated  
**Full name:**  
triggering receptor expressed on myeloid cells 2  
**Gene ID:**  
54209

## Applications

**Tested Applications:**  
Sandwich ELISA

**Range:**  
23.4-1500 pg/mL (Sandwich ELISA)

**Recommended Dilutions:**  
It is recommended that this reagent should be titrated in each testing system to obtain optimal results.

## Product Information

MP00440-4 targets TREM2 in immunoassays as a matched antibody pair. Validated in Sandwich ELISA.

Capture antibody: TREM2 Recombinant antibody, PBS Only (Capture/Detector) 83438-5-PBS (240384G3). 100 µg. Concentration 1 mg/ml.

Detection antibody: TREM2 Recombinant antibody, PBS Only (Detector) 83438-7-PBS (240384F6). 100 µg. Concentration 1 mg/ml.

Alternative TREM2 matched antibody pairs: MP00440-1, MP00440-2, MP00440-3, MP50208-1

Unconjugated rabbit recombinant monoclonal antibody pair in PBS only storage buffer at a concentration of 1 mg/mL, ready for conjugation. Created using Proteintech's proprietary in-house recombinant technology. Recombinant production enables unrivalled batch-to-batch consistency, easy scale-up, and future security of supply.

Matched antibody pairs are designed for use in a variety of assays and platforms that require matched antibody pairs.

Antibody use should be optimized for each application and assay.

## Storage

**Storage:**  
Store at -80°C.  
**Storage buffer:**  
PBS only

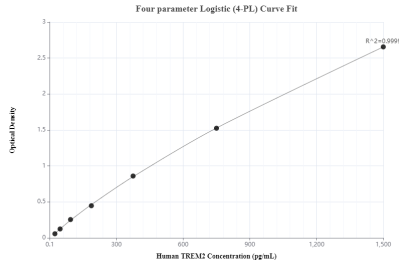
For technical support and original validation data for this product please contact:

T: 1 (888) 4PTGLAB (1-888-478-4522) (toll free in USA), or 1(312) 455-8498 (outside USA)

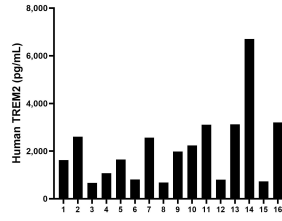
E: [proteintech@ptglab.com](mailto:proteintech@ptglab.com)  
W: [ptglab.com](http://ptglab.com)

**This product is exclusively available under Proteintech Group brand and is not available to purchase from any other manufacturer.**

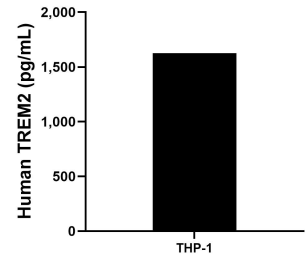
## Selected Validation Data



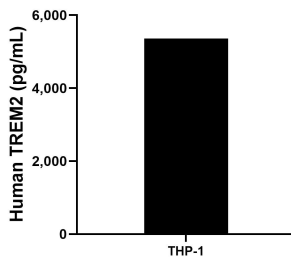
Sandwich ELISA standard curve of MP00440-4, Human TREM2 Monoclonal Matched Antibody Pair - PBS only. 83438-5-PBS was coated to a plate as the capture antibody and incubated with serial dilutions of standard Eg0747. 83438-7-PBS was HRP conjugated as the detection antibody. Range: 23.4-1500 pg/mL



Serum of sixteen individual healthy human donors were measured. The human TREM2 concentration of detected samples was determined to be 2,096.2 pg/mL with a range of 661.9-6,705.0 pg/mL



THP-1 cells ( $3 \times 10^6$  cells/mL) were cultured in RPMI with 10% fetal bovine serum, 50  $\mu$ M  $\beta$ -mercaptoethanol, 2 mM L-glutamine, 100 U/mL penicillin, and 100  $\mu$ g/mL streptomycin sulfate. Aliquots of the cell culture supernatants were removed and assayed for levels of human TREM2 and measured 1,626.6 pg/mL



The mean human TREM2 concentration was determined to be 5,362.2 pg/mL in THP-1 cell extract based on a 3.0 mg/mL extract load.