

For Research Use Only

Mouse CD45/PTPRC Recombinant Matched Antibody Pair, PBS Only



Catalog Number:MP00412-3

Capture Antibody Information

Catalog Number:
83396-2-PBS
Host:
Rabbit
Isotype:
IgG
Purification Method:
Protein A purification

Clone ID:
240356E8
Reactivity:
Mouse

Conjugate:
Unconjugated
Full name:
protein tyrosine phosphatase, receptor type, C
Gene ID:
19264

Detection Antibody Information

Catalog Number:
83396-4-PBS
Host:
Rabbit
Isotype:
IgG
Purification Method:
Protein A purification

Clone ID:
240356C5
Reactivity:
Mouse
GenBank:
NM_001111316.2

Conjugate:
Unconjugated
Full name:
protein tyrosine phosphatase, receptor type, C
Gene ID:
19264

Applications

Tested Applications:
Cytometric bead array

Range:
2.5-40 ng/mL (Cytometric Bead Array)
Recommended Dilutions:
It is recommended that this reagent should be titrated in each testing system to obtain optimal results.

Product Information

MP00412-3 targets CD45/PTPRC in immunoassays as a matched antibody pair. Validated in Cytometric bead array.
Capture antibody: Mouse CD45/PTPRC Recombinant antibody, PBS Only (Capture) 83396-2-PBS (240356E8). 100 µg. Concentration 1 mg/ml.
Detection antibody: Mouse CD45/PTPRC Recombinant antibody, PBS Only (Capture/Detector) 83396-4-PBS (240356C5). 100 µg. Concentration 1 mg/ml.
Alternative CD45/PTPRC matched antibody pairs: MP00412-1, MP00412-2
Unconjugated rabbit recombinant monoclonal antibody pair in PBS only storage buffer at a concentration of 1 mg/mL, ready for conjugation. Created using Proteintech's proprietary in-house recombinant technology. Recombinant production enables unrivalled batch-to-batch consistency, easy scale-up, and future security of supply.
Matched antibody pairs are designed for use in a variety of assays and platforms that require matched antibody pairs.
Antibody use should be optimized for each application and assay.

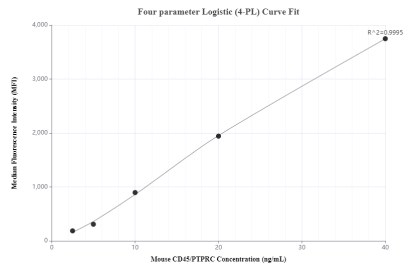
Storage

Storage:
Store at -80°C.
Storage buffer:
PBS only

For technical support and original validation data for this product please contact:
T: 1 (888) 4PTGLAB (1-888-478-4522) (toll free in USA), or 1(312) 455-8498 (outside USA) E: proteintech@ptglab.com W: ptglab.com

This product is exclusively available under Proteintech Group brand and is not available to purchase from any other manufacturer.

Selected Validation Data



Cytometric bead array standard curve of MP00412-3, MOUSE CD45/PTPRC Recombinant Matched Antibody Pair, PBS Only. Capture antibody: 83396-2-PBS. Detection antibody: 83396-4-PBS. Standard: Eg0845. Range: 2.5-40 ng/mL.