

For Research Use Only

# Mouse CD45/PTPRC Recombinant Matched Antibody Pair, PBS Only



Catalog Number:MP00412-2

## Capture Antibody Information

**Catalog Number:**  
83396-4-PBS  
**Host:**  
Rabbit  
**Isotype:**  
IgG  
**Purification Method:**  
Protein A purification

**Clone ID:**  
240356C5  
**Reactivity:**  
Mouse

**Conjugate:**  
Unconjugated  
**Full name:**  
protein tyrosine phosphatase, receptor type, C  
**Gene ID:**  
19264

## Detection Antibody Information

**Catalog Number:**  
83396-1-PBS  
**Host:**  
Rabbit  
**Isotype:**  
IgG  
**Purification Method:**  
Protein A purification

**Clone ID:**  
240356C11  
**Reactivity:**  
Mouse  
**GenBank:**  
NM\_001111316.2

**Conjugate:**  
Unconjugated  
**Full name:**  
protein tyrosine phosphatase, receptor type, C  
**Gene ID:**  
19264

## Applications

**Tested Applications:**  
Cytometric bead array

**Range:**  
1.25-40 ng/mL (Cytometric Bead Array)

**Recommended Dilutions:**  
It is recommended that this reagent should be titrated in each testing system to obtain optimal results.

## Product Information

MP00412-2 targets CD45/PTPRC in immunoassays as a matched antibody pair. Validated in Cytometric bead array.

Capture antibody: Mouse CD45/PTPRC Recombinant antibody, PBS Only (Capture/Detector) 83396-4-PBS (240356C5). 100 µg. Concentration 1 mg/ml.

Detection antibody: Mouse CD45/PTPRC Recombinant antibody, PBS Only (Detector) 83396-1-PBS (240356C11). 100 µg. Concentration 1 mg/ml.

Alternative CD45/PTPRC matched antibody pairs: MP00412-1, MP00412-3

Unconjugated rabbit recombinant monoclonal antibody pair in PBS only storage buffer at a concentration of 1 mg/mL, ready for conjugation. Created using Proteintech's proprietary in-house recombinant technology. Recombinant production enables unrivalled batch-to-batch consistency, easy scale-up, and future security of supply.

Matched antibody pairs are designed for use in a variety of assays and platforms that require matched antibody pairs.

Antibody use should be optimized for each application and assay.

## Storage

**Storage:**  
Store at -80°C.  
**Storage buffer:**  
PBS only

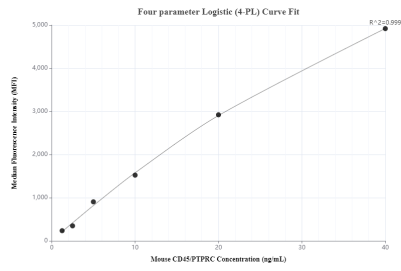
For technical support and original validation data for this product please contact:

T: 1 (888) 4PTGLAB (1-888-478-4522) (toll free in USA), or 1(312) 455-8498 (outside USA)

E: [proteintech@ptglab.com](mailto:proteintech@ptglab.com)  
W: [ptglab.com](http://ptglab.com)

**This product is exclusively available under Proteintech Group brand and is not available to purchase from any other manufacturer.**

## Selected Validation Data



Cytometric bead array standard curve of MP00412-2, MOUSE CD45/PTPRC Recombinant Matched Antibody Pair, PBS Only. Capture antibody: 83396-4-PBS. Detection antibody: 83396-1-PBS. Standard: Eg0845. Range: 1.25-40 ng/mL