

For Research Use Only



CD141/Thrombomodulin Recombinant Matched Antibody Pair, PBS Only

Catalog Number: MP00411-3

Capture Antibody Information

Catalog Number:
83416-1-PBS
Host:
Rabbit
Isotype:
IgG
Purification Method:
Protein A purification

Clone ID:
240365A10
Reactivity:
human

Conjugate:
Unconjugated
Full name:
thrombomodulin
Gene ID:
7056

Detection Antibody Information

Catalog Number:
83416-7-PBS
Host:
Rabbit
Isotype:
IgG
Purification Method:
Protein A purification

Clone ID:
240365F10
Reactivity:
human
GenBank:
NM_000361.3

Conjugate:
Unconjugated
Full name:
thrombomodulin
Gene ID:
7056

Applications

Tested Applications:
Sandwich ELISA

Range:
31.3-2000 pg/mL (Sandwich ELISA)

Recommended Dilutions:
It is recommended that this reagent should be titrated in each testing system to obtain optimal results.

Product Information

MP00411-3 targets CD141/Thrombomodulin in immunoassays as a matched antibody pair. Validated in Sandwich ELISA.

Capture antibody: CD141/Thrombomodulin Recombinant antibody, PBS Only (Capture) 83416-1-PBS (240365A10). 100 µg. Concentration 1 mg/ml.

Detection antibody: CD141/Thrombomodulin Recombinant antibody, PBS Only (Detector) 83416-7-PBS (240365F10). 100 µg. Concentration 1 mg/ml.

Alternative CD141/Thrombomodulin matched antibody pairs: MP00411-1, MP00411-2

Unconjugated rabbit recombinant monoclonal antibody pair in PBS only storage buffer at a concentration of 1 mg/mL, ready for conjugation. Created using Proteintech's proprietary in-house recombinant technology. Recombinant production enables unrivalled batch-to-batch consistency, easy scale-up, and future security of supply.

Matched antibody pairs are designed for use in a variety of assays and platforms that require matched antibody pairs.

Antibody use should be optimized for each application and assay.

Storage

Storage:
Store at -80°C.
Storage buffer:
PBS only

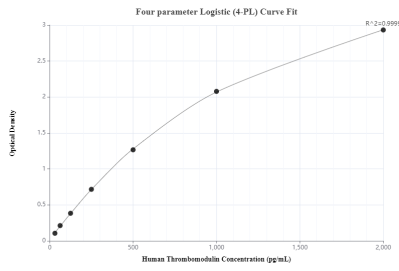
For technical support and original validation data for this product please contact:

T: 1 (888) 4PTGLAB (1-888-478-4522) (toll free in USA), or 1(312) 455-8498 (outside USA)

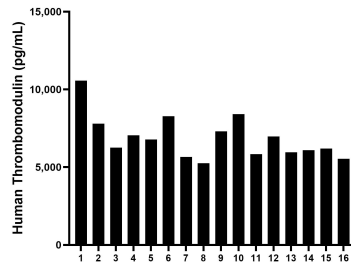
E: proteintech@ptglab.com
W: ptglab.com

This product is exclusively available under Proteintech Group brand and is not available to purchase from any other manufacturer.

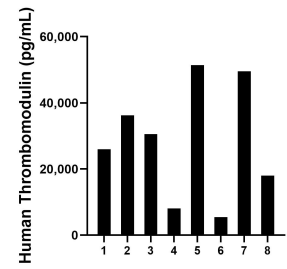
Selected Validation Data



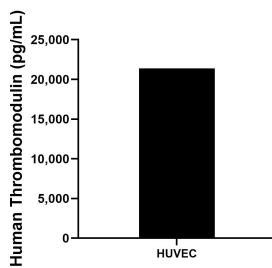
Sandwich ELISA standard curve of MP00411-3, Human CD141/Thrombomodulin Recombinant Matched Antibody Pair - PBS only. 83416-1-PBS was coated to a plate as the capture antibody and incubated with serial dilutions of standard Eg0944. 83416-7-PBS was HRP conjugated as the detection antibody. Range: 31.3-2000 pg/mL



Serum of sixteen individual healthy human donors was measured. The CD141/Thrombomodulin concentration of detected samples was determined to be 6,871.5 pg/mL with a range of 5,248.2 - 10,568.0 pg/mL



Urine of eight individual healthy human donors was measured. The CD141/Thrombomodulin concentration of detected samples was determined to be 28,157.6 pg/mL with a range of 5,473.9 - 51,428.0 pg/mL



The mean CD141/Thrombomodulin concentration was determined to be 21,389.33 pg/mL in HUVEC cell extract based on a 1.8 mg/mL extract load.