

For Research Use Only

TLN1 Recombinant Matched Antibody Pair, PBS Only



Catalog Number:MP00405-4

Capture Antibody Information

Catalog Number:
82856-19-PBS

Host:
Rabbit

Isotype:
IgG

Purification Method:
Protein A purification

Clone ID:
240294A3

Reactivity:
human

Immunogen Catalog Number:
Ag5367

Conjugate:
Unconjugated

Full name:
talin 1

Gene ID:
7094

Detection Antibody Information

Catalog Number:
82856-15-PBS

Host:
Rabbit

Isotype:
IgG

Purification Method:
Protein A purification

Clone ID:
240294F4

Reactivity:
human

GenBank:
BC042923

Immunogen Catalog Number:
Ag5367

Conjugate:
Unconjugated

Full name:
talin 1

Gene ID:
7094

Applications

Tested Applications:
Sandwich ELISA

Range:
0.625-40 ng/mL (Sandwich ELISA)

Recommended Dilutions:
It is recommended that this reagent should be titrated in each testing system to obtain optimal results.

Product Information

MP00405-4 targets TLN1 in immunoassays as a matched antibody pair. Validated in Sandwich ELISA.

Capture antibody: TLN1 Recombinant antibody, PBS Only (Capture) 82856-19-PBS (240294A3). 100 µg. Concentration 1 mg/ml.

Detection antibody: TLN1 Recombinant antibody, PBS Only (Detector) 82856-15-PBS (240294F4). 100 µg. Concentration 1 mg/ml.

Alternative TLN1 matched antibody pairs: MP00405-1, MP00405-2, MP00405-3

Unconjugated rabbit recombinant monoclonal antibody pair in PBS only storage buffer at a concentration of 1 mg/mL, ready for conjugation. Created using Proteintech's proprietary in-house recombinant technology. Recombinant production enables unrivalled batch-to-batch consistency, easy scale-up, and future security of supply.

Matched antibody pairs are designed for use in a variety of assays and platforms that require matched antibody pairs.

Antibody use should be optimized for each application and assay.

Storage

Storage:
Store at -80°C.
Storage buffer:
PBS only

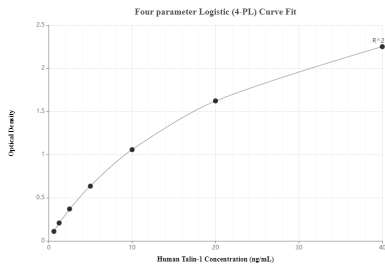
For technical support and original validation data for this product please contact:

T: 1 (888) 4PTGLAB (1-888-478-4522) (toll free in USA), or 1(312) 455-8498 (outside USA)

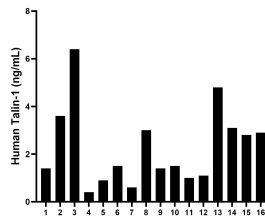
E: proteintech@ptglab.com
W: ptglab.com

This product is exclusively available under Proteintech Group brand and is not available to purchase from any other manufacturer.

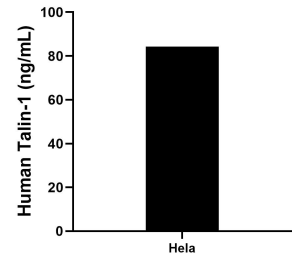
Selected Validation Data



Sandwich ELISA standard curve of MP00405-4, human Talin-1 Recombinant Matched Antibody Pair - PBS only. 82856-19-PBS was coated to a plate as the capture antibody and incubated with serial dilutions of standard Ag5367. 82856-15-PBS was HRP conjugated as the detection antibody. Range: 0.625-40 ng/mL



Serum of sixteen individual healthy human donors was measured. The Talin-1 concentration of detected samples was determined to be 2.3 ng/mL with a range of 0.4 - 6.4 ng/mL.



The mean Talin-1 concentration was determined to be 84.3 ng/mL in HeLa cell extract based on a 3.1 mg/mL extract load.