

For Research Use Only

# NEIL1 Recombinant Matched Antibody Pair, PBS Only



Catalog Number:MP00380-3

## Capture Antibody Information

Catalog Number:  
83376-6-PBS

Host:  
Rabbit

Isotype:  
IgG

Purification Method:  
Protein A purification

Clone ID:  
240322D6

Reactivity:  
human

Immunogen Catalog Number:  
Ag2793

Conjugate:  
Unconjugated

Full name:  
nei endonuclease VIII-like 1 (E. coli)

Gene ID:  
79661

## Detection Antibody Information

Catalog Number:  
83376-1-PBS

Host:  
Rabbit

Isotype:  
IgG

Purification Method:  
Protein A purification

Clone ID:  
240322A8

Reactivity:  
human

GenBank:  
BC010876

Immunogen Catalog Number:  
Ag2793

Conjugate:  
Unconjugated

Full name:  
nei endonuclease VIII-like 1 (E. coli)

Gene ID:  
79661

## Applications

Tested Applications:  
Cytometric bead array, Sandwich ELISA

Range:  
1.56-100 ng/mL (Cytometric Bead Array)  
0.313-20 ng/mL (Sandwich ELISA)

Recommended Dilutions:  
It is recommended that this reagent should be titrated in each testing system to obtain optimal results.

## Product Information

MP00380-3 targets NEIL1 in immunoassays as a matched antibody pair. Validated in Cytometric bead array, Sandwich ELISA.

Capture antibody: NEIL1 Recombinant antibody, PBS Only (Capture) 83376-6-PBS (240322D6). 100 µg. Concentration 1 mg/mL.

Detection antibody: NEIL1 Recombinant antibody, PBS Only (Detector) 83376-1-PBS (240322A8). 100 µg. Concentration 1 mg/mL.

Alternative NEIL1 matched antibody pairs: MP00380-1, MP00380-2

Unconjugated rabbit recombinant monoclonal antibody pair in PBS only storage buffer at a concentration of 1 mg/mL, ready for conjugation. Created using Proteintech's proprietary in-house recombinant technology. Recombinant production enables unrivalled batch-to-batch consistency, easy scale-up, and future security of supply.

Matched antibody pairs are designed for use in a variety of assays and platforms that require matched antibody pairs.

Antibody use should be optimized for each application and assay.

## Storage

Storage:  
Store at -80°C.  
Storage buffer:  
PBS only

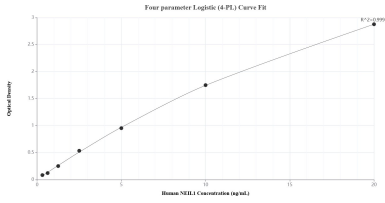
For technical support and original validation data for this product please contact:

T: 1 (888) 4PTGLAB (1-888-478-4522) (toll free in USA), or 1(312) 455-8498 (outside USA)

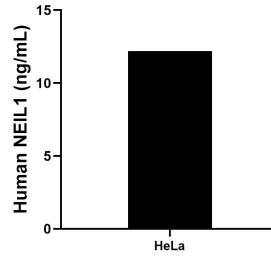
E: [proteintech@ptglab.com](mailto:proteintech@ptglab.com)  
W: [ptglab.com](http://ptglab.com)

This product is exclusively available under Proteintech Group brand and is not available to purchase from any other manufacturer.

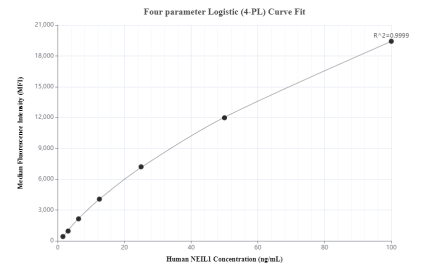
## Selected Validation Data



Sandwich ELISA standard curve of MP00380-3, Human NEIL1 Recombinant Matched Antibody Pair - PBS only. 83376-6-PBS was coated to a plate as the capture antibody and incubated with serial dilutions of standard Ag2793. 83376-1-PBS was HRP conjugated as the detection antibody. Range: 0.313-20 ng/mL



The mean NEIL1 concentration was determined to be 12.20 ng/mL in HeLa cell extract based on a 2.80 mg/mL extract load.



Cytometric bead array standard curve of MP00380-3, NEIL1 Recombinant Matched Antibody Pair, PBS Only. Capture antibody: 83376-6-PBS. Detection antibody: 83376-1-PBS. Standard: Ag2793. Range: 1.56-100 ng/mL