

For Research Use Only

SLC22A8 Recombinant Matched Antibody Pair, PBS Only



Catalog Number:MP00363-1

Capture Antibody Information

Catalog Number:
83357-4-PBS
Host:
Rabbit
Isotype:
IgG
Purification Method:
Protein A purification

Clone ID:
240138G12
Reactivity:
Human
Immunogen Catalog Number:
Ag9527

Conjugate:
Unconjugated
Full name:
solute carrier family 22 (organic anion transporter), member 8
Gene ID:
9376

Detection Antibody Information

Catalog Number:
83357-5-PBS
Host:
Rabbit
Isotype:
IgG
Purification Method:
Protein A purification

Clone ID:
240138B10
Reactivity:
Human
GenBank:
bc022387
Immunogen Catalog Number:
Ag9527

Conjugate:
Unconjugated
Full name:
solute carrier family 22 (organic anion transporter), member 8
Gene ID:
9376

Applications

Tested Applications:
Cytometric bead array

Range:
0.313-40ng/mL (Cytometric Bead Array)

Recommended Dilutions:
It is recommended that this reagent should be titrated in each testing system to obtain optimal results.

Product Information

MP00363-1 targets SLC22A8 in immunoassays as a matched antibody pair. Validated in Cytometric bead array.

Capture antibody: SLC22A8 Recombinant antibody, PBS Only (Capture) 83357-4-PBS (240138G12). 100 µg. Concentration 1 mg/ml.

Detection antibody: SLC22A8 Recombinant antibody, PBS Only (Detector) 83357-5-PBS (240138B10). 100 µg. Concentration 1 mg/ml.

Alternative SLC22A8 matched antibody pairs: MP00363-2, MP00363-3

Unconjugated rabbit recombinant monoclonal antibody pair in PBS only storage buffer at a concentration of 1 mg/mL, ready for conjugation. Created using Proteintech's proprietary in-house recombinant technology. Recombinant production enables unrivalled batch-to-batch consistency, easy scale-up, and future security of supply.

Matched antibody pairs are designed for use in a variety of assays and platforms that require matched antibody pairs.

Antibody use should be optimized for each application and assay.

Storage

Storage:
Store at -80°C.
Storage buffer:
PBS only

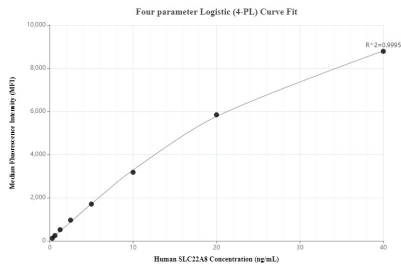
For technical support and original validation data for this product please contact:

T: 1 (888) 4PTGLAB (1-888-478-4522) (toll free in USA), or 1(312) 455-8498 (outside USA)

E: proteintech@ptglab.com
W: ptglab.com

This product is exclusively available under Proteintech Group brand and is not available to purchase from any other manufacturer.

Selected Validation Data



Cytometric bead array standard curve of MP00363-1, SLC22A8 Recombinant Matched Antibody Pair, PBS Only. Capture antibody: 83357-4-PBS. Detection antibody: 83357-5-PBS. Standard: Ag9527. Range: 0.313-40ng/mL.