

For Research Use Only

# SLC38A7 Recombinant Matched Antibody Pair, PBS Only



Catalog Number:MP00351-1

## Capture Antibody Information

**Catalog Number:**  
83346-1-PBS

**Host:**  
Rabbit

**Isotype:**  
IgG

**Purification Method:**  
Protein A purification

**Clone ID:**  
240147A2

**Reactivity:**  
Human

**Immunogen Catalog Number:**  
Ag35081

**Conjugate:**  
Unconjugated

**Full name:**  
solute carrier family 38, member 7

**Gene ID:**  
55238

## Detection Antibody Information

**Catalog Number:**  
83346-2-PBS

**Host:**  
Rabbit

**Isotype:**  
IgG

**Purification Method:**  
Protein A purification

**Clone ID:**  
240147G5

**Reactivity:**  
Human

**GenBank:**  
BC001961

**Immunogen Catalog Number:**  
Ag35081

**Conjugate:**  
Unconjugated

**Full name:**  
solute carrier family 38, member 7

**Gene ID:**  
55238

## Applications

**Tested Applications:**  
Cytometric bead array

**Range:**  
0.313-40 ng/mL (Cytometric Bead Array)

**Recommended Dilutions:**  
It is recommended that this reagent should be titrated in each testing system to obtain optimal results.

## Product Information

MP00351-1 targets SLC38A7 in immunoassays as a matched antibody pair. Validated in Cytometric bead array.

Capture antibody: SLC38A7 Recombinant antibody, PBS Only (Capture) 83346-1-PBS (240147A2). 100 µg. Concentration 1 mg/ml.

Detection antibody: SLC38A7 Recombinant antibody, PBS Only (Detector) 83346-2-PBS (240147G5). 100 µg. Concentration 1 mg/ml.

Alternative SLC38A7 matched antibody pairs: MP00351-2, MP00351-3

Unconjugated rabbit recombinant monoclonal antibody pair in PBS only storage buffer at a concentration of 1 mg/mL, ready for conjugation. Created using Proteintech's proprietary in-house recombinant technology. Recombinant production enables unrivalled batch-to-batch consistency, easy scale-up, and future security of supply.

Matched antibody pairs are designed for use in a variety of assays and platforms that require matched antibody pairs.

Antibody use should be optimized for each application and assay.

## Storage

**Storage:**  
Store at -80°C.  
**Storage buffer:**  
PBS only

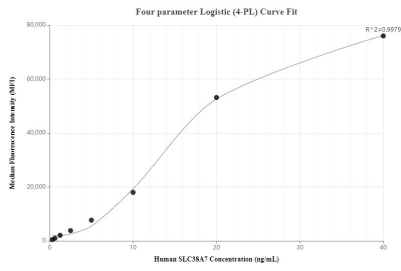
For technical support and original validation data for this product please contact:

T: 1 (888) 4PTGLAB (1-888-478-4522) (toll free in USA), or 1(312) 455-8498 (outside USA)

E: [proteintech@ptglab.com](mailto:proteintech@ptglab.com)  
W: [ptglab.com](http://ptglab.com)

**This product is exclusively available under Proteintech Group brand and is not available to purchase from any other manufacturer.**

## Selected Validation Data



Cytometric bead array standard curve of MP00351-1, SLC38A7 Recombinant Matched Antibody Pair, PBS Only. Capture antibody: 83346-1-PBS. Detection antibody: 83346-2-PBS. Standard: Ag35081. Range: 0.313-40 ng/mL.