

For Research Use Only

ZO-1 Recombinant Matched Antibody Pair, PBS Only



Catalog Number:MP00349-4

Capture Antibody Information

Catalog Number:
82870-2-PBS

Host:
Rabbit

Isotype:
IgG

Purification Method:
Protein A purification

Clone ID:
240150A1

Reactivity:
human

Immunogen Catalog Number:
Ag33182

Conjugate:
Unconjugated

Full name:
tight junction protein 1 (zona occludens 1)

Gene ID:
7082

Detection Antibody Information

Catalog Number:
82870-9-PBS

Host:
Rabbit

Isotype:
IgG

Purification Method:
Protein A purification

Clone ID:
240150C5

Reactivity:
human

GenBank:
BC111712

Immunogen Catalog Number:
Ag33182

Conjugate:
Unconjugated

Full name:
tight junction protein 1 (zona occludens 1)

Gene ID:
7082

Applications

Tested Applications:
Sandwich ELISA

Range:
125-8000 pg/mL (Sandwich ELISA)

Recommended Dilutions:
It is recommended that this reagent should be titrated in each testing system to obtain optimal results.

Product Information

MP00349-4 targets ZO-1 in immunoassays as a matched antibody pair. Validated in Sandwich ELISA.

Capture antibody: ZO1 Recombinant antibody, PBS Only (Capture) 82870-2-PBS (240150A1). 100 µg. Concentration 1 mg/ml.

Detection antibody: ZO1 Recombinant antibody, PBS Only (Detector) 82870-9-PBS (240150C5). 100 µg. Concentration 1 mg/ml.

Unconjugated rabbit recombinant monoclonal antibody pair in PBS only storage buffer at a concentration of 1 mg/mL, ready for conjugation. Created using Proteintech's proprietary in-house recombinant technology. Recombinant production enables unrivalled batch-to-batch consistency, easy scale-up, and future security of supply.

Matched antibody pairs are designed for use in a variety of assays and platforms that require matched antibody pairs.

Antibody use should be optimized for each application and assay.

Storage

Storage:
Store at -80°C.
Storage buffer:
PBS only

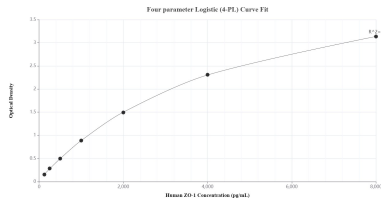
For technical support and original validation data for this product please contact:

T: 1 (888) 4PTGLAB (1-888-478-4522) (toll free in USA), or 1(312) 455-8498 (outside USA)

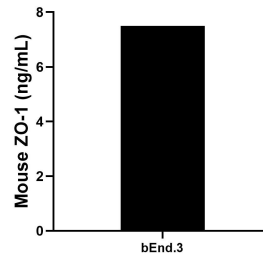
E: proteintech@ptglab.com
W: ptglab.com

This product is exclusively available under Proteintech Group brand and is not available to purchase from any other manufacturer.

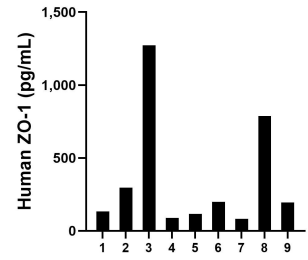
Selected Validation Data



Sandwich ELISA standard curve of MP00349-4, Human ZO-1 Recombinant Matched Antibody Pair - PBS only. 82870-2-PBS was coated to a plate as the capture antibody and incubated with serial dilutions of standard Ag33182. 82870-9-PBS was HRP conjugated as the detection antibody. Range: 125-8000 pg/mL



The mean ZO-1 concentration was determined to be 7.5 ng/mL in bEnd.3 cell extract based on a 1.8 mg/mL extract load.



Serum of nine individual healthy human donors was measured. The ZO-1 concentration of detected samples was determined to be 352.4 pg/mL with a range of 83.4 - 1,272.8 pg/mL