

For Research Use Only

SAT1 Recombinant Matched Antibody Pair, PBS Only



Catalog Number:MP00344-4

Capture Antibody Information

Catalog Number:
83319-1-PBS
Host:
Rabbit
Isotype:
IgG
Purification Method:
Protein A purification

Clone ID:
240157G2
Reactivity:
human
Immunogen Catalog Number:
Ag1154

Conjugate:
Unconjugated
Full name:
spermidine/spermine N1-acetyltransferase 1
Gene ID:
6303

Detection Antibody Information

Catalog Number:
83319-3-PBS
Host:
Rabbit
Isotype:
IgG
Purification Method:
Protein A purification

Clone ID:
240157C6
Reactivity:
human
GenBank:
BC008424
Immunogen Catalog Number:
Ag1154

Conjugate:
Unconjugated
Full name:
spermidine/spermine N1-acetyltransferase 1
Gene ID:
6303

Applications

Tested Applications:
Sandwich ELISA

Range:
78.1-5000 pg/mL (Sandwich ELISA)

Recommended Dilutions:
It is recommended that this reagent should be titrated in each testing system to obtain optimal results.

Product Information

MP00344-4 targets SAT1 in immunoassays as a matched antibody pair. Validated in Sandwich ELISA.

Capture antibody: SAT1 Recombinant antibody, PBS Only (Capture/Detector) 83319-1-PBS (240157G2). 100 µg. Concentration 1 mg/mL.

Detection antibody: SAT1 Recombinant antibody, PBS Only (Capture/Detector) 83319-3-PBS (240157C6). 100 µg. Concentration 1 mg/mL.

Unconjugated rabbit recombinant monoclonal antibody pair in PBS only storage buffer at a concentration of 1 mg/mL, ready for conjugation. Created using Proteintech's proprietary in-house recombinant technology. Recombinant production enables unrivalled batch-to-batch consistency, easy scale-up, and future security of supply.

Matched antibody pairs are designed for use in a variety of assays and platforms that require matched antibody pairs.

Antibody use should be optimized for each application and assay.

Storage

Storage:
Store at -80°C.
Storage buffer:
PBS only

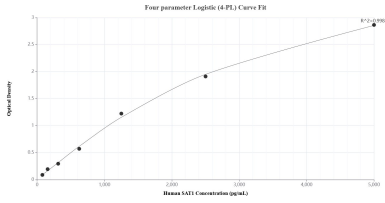
For technical support and original validation data for this product please contact:

T: 1 (888) 4PTGLAB (1-888-478-4522) (toll free in USA), or 1(312) 455-8498 (outside USA)

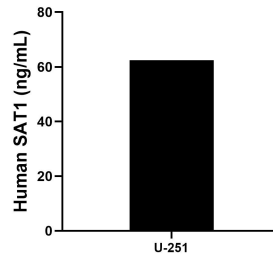
E: proteintech@ptglab.com
W: ptglab.com

This product is exclusively available under Proteintech Group brand and is not available to purchase from any other manufacturer.

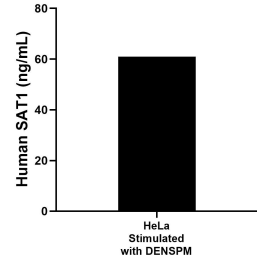
Selected Validation Data



Sandwich ELISA standard curve of MP00344-4, Human SAT1 Recombinant Matched Antibody Pair - PBS only. 83319-1-PBS was coated to a plate as the capture antibody and incubated with serial dilutions of standard Ag1154. 83319-3-PBS was HRP conjugated as the detection antibody. Range: 78.1-5000 pg/mL.



The mean SAT1 concentration was determined to be 62.4 ng/mL in U-251 cell extract based on a 1.4 mg/mL extract load.



The mean SAT1 concentration was determined to be 60.9 ng/mL in DENSPM-stimulated HeLa cell extracts based on a 3.0 mg/mL extract load.