

# GPC1 Recombinant Matched Antibody Pair, PBS Only

Catalog Number:MP00342-2

## Capture Antibody Information

**Catalog Number:**

83318-3-PBS

**Host:**

Rabbit

**Isotype:**

IgG

**Purification Method:**

Protein A purification

**Clone ID:**

240207E12

**Reactivity:**

human

**Conjugate:**

Unconjugated

**Full name:**

glypican 1

**Gene ID:**

2817

## Detection Antibody Information

**Catalog Number:**

83318-2-PBS

**Host:**

Rabbit

**Isotype:**

IgG

**Purification Method:**

Protein A purification

**Clone ID:**

240207F5

**Reactivity:**

human

**GenBank:**

BC051279

**Conjugate:**

Unconjugated

**Full name:**

glypican 1

**Gene ID:**

2817

## Applications

**Tested Applications:**

Cytometric bead array, Sandwich ELISA

**Range:**

1.25-40 ng/mL (Cytometric Bead Array)  
0.156-10 ng/mL (Sandwich ELISA)

**Recommended Dilutions:**

It is recommended that this reagent should be titrated in each testing system to obtain optimal results.

## Product Information

MP00342-2 targets GPC1 in immunoassays as a matched antibody pair. Validated in Cytometric bead array, Sandwich ELISA.

Capture antibody: GPC1 Recombinant antibody, PBS Only (Capture) 83318-3-PBS (240207E12). 100 µg. Concentration 1 mg/ml.

Detection antibody: GPC1 Recombinant antibody, PBS Only (Capture/Detector) 83318-2-PBS (240207F5). 100 µg. Concentration 1 mg/ml.

Alternative GPC1 matched antibody pairs: MP00342-1, MP00342-3, MP50239-1, MP50239-2, MP50239-3

Unconjugated rabbit recombinant monoclonal antibody pair in PBS only storage buffer at a concentration of 1 mg/mL, ready for conjugation. Created using Proteintech's proprietary in-house recombinant technology. Recombinant production enables unrivalled batch-to-batch consistency, easy scale-up, and future security of supply.

Matched antibody pairs are designed for use in a variety of assays and platforms that require matched antibody pairs.

Antibody use should be optimized for each application and assay.

## Storage

**Storage:**

Store at -80°C.

**Storage buffer:**

PBS only

For technical support and original validation data for this product please contact:

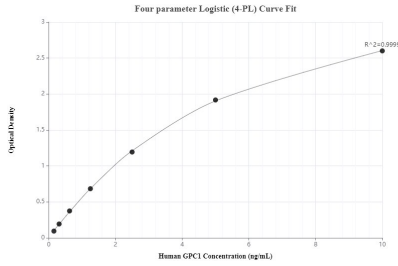
T: 1 (888) 4PTGLAB (1-888-478-4522) (toll free in USA), or 1(312) 455-8498 (outside USA)

E: [proteintech@ptglab.com](mailto:proteintech@ptglab.com)

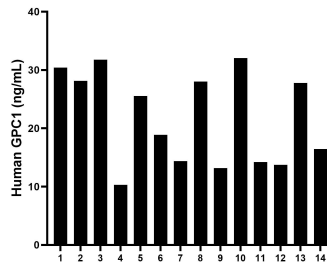
W: [ptglab.com](http://ptglab.com)

**This product is exclusively available under Proteintech Group brand and is not available to purchase from any other manufacturer.**

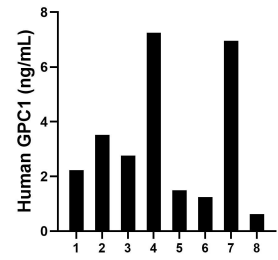
## Selected Validation Data



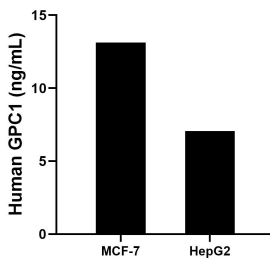
Sandwich ELISA standard curve of MP00342-2, human GPC1 Recombinant Matched Antibody Pair - PBS only. 83318-3-PBS was coated to a plate as the capture antibody and incubated with serial dilutions of standard Eg0737. 83318-2-PBS was HRP conjugated as the detection antibody. Range: 0.156-10 ng/mL



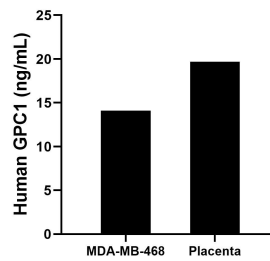
Serum of fourteen individual healthy human donors was measured. The GPC1 concentration of detected samples was determined to be 21.8 ng/mL with a range of 10.3 - 32.1 ng/mL



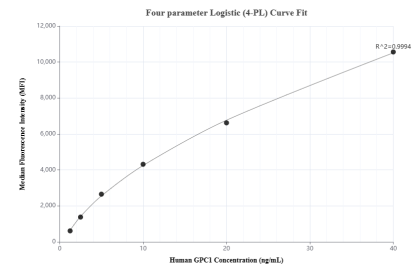
Urine of eight individual healthy human donors was measured. The GPC1 concentration of detected samples was determined to be 3.3 ng/mL with a range of 0.6 - 7.2 ng/mL



MCF-7 human breast cancer cells ( $5 \times 10^6$  cells/mL) were cultured in DMEM and 10% fetal bovine serum, 4 mM L-glutamine, 4500 mg/L glucose, 100 U/mL penicillin, and 100 µg/mL streptomycin sulfate. An aliquot of the cell culture supernatants was removed, assayed for human GPC1, and measured 13.1 ng/mL. HepG2 human hepatocellular carcinoma cells ( $5 \times 10^6$  cells/mL) were cultured in DMEM supplemented with 10% fetal bovine serum, 100 U/mL penicillin, and



The mean GPC1 concentration was determined to be 10.0 ng/mL in MDA-MB-468 cell extract based on a 3.2 mg/mL extract load and 19.7 ng/mL in placenta tissue extract based on a 1.8 mg/mL extract load.



Cytometric bead array standard curve of MP00342-2, GPC1 Recombinant Matched Antibody Pair, PBS Only. Capture antibody: 83318-3-PBS. Detection antibody: 83318-2-PBS. Standard: Eg0737. Range: 1.25-40 ng/mL