

BRAP Recombinant Matched Antibody Pair, PBS Only

Catalog Number:MP00338-4

Capture Antibody Information

Catalog Number:

83314-5-PBS

Host:

Rabbit

Isotype:

IgG

Purification Method:

Protein A purification

Clone ID:

240099G12

Reactivity:

human

Immunogen Catalog Number:

Ag26728

Conjugate:

Unconjugated

Full name:

BRCA1 associated protein

Gene ID:

8315

Detection Antibody Information

Catalog Number:

83314-2-PBS

Host:

Rabbit

Isotype:

IgG

Purification Method:

Protein A purification

Clone ID:

240099H3

Reactivity:

human

GenBank:

BC136698

Immunogen Catalog Number:

Ag26728

Conjugate:

Unconjugated

Full name:

BRCA1 associated protein

Gene ID:

8315

Applications

Tested Applications:

Sandwich ELISA

Range:

0.313-20 ng/mL (Sandwich ELISA)

Recommended Dilutions:

It is recommended that this reagent should be titrated in each testing system to obtain optimal results.

Product Information

MP00338-4 targets BRAP in immunoassays as a matched antibody pair. Validated in Sandwich ELISA.

Capture antibody: BRAP Recombinant antibody, PBS Only (Capture/Detector) 83314-5-PBS (240099G12). 100 µg. Concentration 1 mg/ml.

Detection antibody: BRAP Recombinant antibody, PBS Only (Capture/Detector) 83314-2-PBS (240099H3). 100 µg. Concentration 1 mg/ml.

Alternative BRAP matched antibody pairs: MP00338-1, MP00338-2, MP00338-3

Unconjugated rabbit recombinant monoclonal antibody pair in PBS only storage buffer at a concentration of 1 mg/mL, ready for conjugation. Created using Proteintech's proprietary in-house recombinant technology. Recombinant production enables unrivalled batch-to-batch consistency, easy scale-up, and future security of supply.

Matched antibody pairs are designed for use in a variety of assays and platforms that require matched antibody pairs.

Antibody use should be optimized for each application and assay.

Storage

Storage:

Store at -80°C.

Storage buffer:

PBS only

For technical support and original validation data for this product please contact:

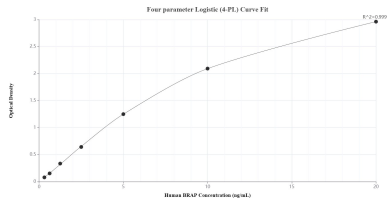
T: 1 (888) 4PTGLAB (1-888-478-4522) (toll free in USA), or 1(312) 455-8498 (outside USA)

E: proteintech@ptglab.com

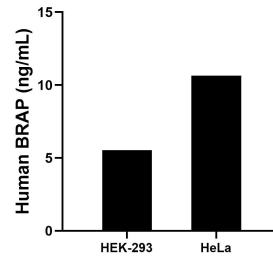
W: ptglab.com

This product is exclusively available under Proteintech Group brand and is not available to purchase from any other manufacturer.

Selected Validation Data



Sandwich ELISA standard curve of MP00338-4, Human BRAP Recombinant Matched Antibody Pair - PBS only. 83314-5-PBS was coated to a plate as the capture antibody and incubated with serial dilutions of standard Ag26728. 83314-2-PBS was HRP conjugated as the detection antibody. Range: 0.313-20 ng/mL



The mean BRAP concentration was determined to be 5.53 ng/mL in HEK-293 cell extract based on a 1.20 mg/mL extract load and 10.64 ng/mL in HeLa cell extract based on a 1.20 mg/mL extract load.