

For Research Use Only

Mouse CD163 Recombinant Matched Antibody Pair, PBS Only



Catalog Number:MP00326-3

Capture Antibody Information

Catalog Number:

83285-1-PBS

Host:

Rabbit

Isotype:

IgG

Purification Method:

Protein A purification

Clone ID:

240233F4

Reactivity:

mouse

Conjugate:

Unconjugated

Full name:

CD163 antigen

Gene ID:

93671

Detection Antibody Information

Catalog Number:

83285-2-PBS

Host:

Rabbit

Isotype:

IgG

Purification Method:

Protein A purification

Clone ID:

240233G5

Reactivity:

mouse

GenBank:

NM_053094.2

Conjugate:

Unconjugated

Full name:

CD163 antigen

Gene ID:

93671

Applications

Tested Applications:

Sandwich ELISA

Range:

78.1-5000 pg/mL (Sandwich ELISA)

Recommended Dilutions:

It is recommended that this reagent should be titrated in each testing system to obtain optimal results.

Product Information

MP00326-3 targets CD163 in immunoassays as a matched antibody pair. Validated in Sandwich ELISA.

Capture antibody: Mouse CD163 Recombinant antibody, PBS Only (Capture/Detector) 83285-1-PBS (240233F4). 100 µg. Concentration 1 mg/mL.

Detection antibody: Mouse CD163 Recombinant antibody, PBS Only (Capture/Detector) 83285-2-PBS (240233G5). 100 µg. Concentration 1 mg/mL.

Alternative CD163 matched antibody pairs: MP00326-1, MP00326-2, MP50318-1, MP50318-2, MP50318-3, MP50318-4

Unconjugated rabbit recombinant monoclonal antibody pair in PBS only storage buffer at a concentration of 1 mg/mL, ready for conjugation. Created using Proteintech's proprietary in-house recombinant technology.

Recombinant production enables unrivalled batch-to-batch consistency, easy scale-up, and future security of supply.

Matched antibody pairs are designed for use in a variety of assays and platforms that require matched antibody pairs.

Antibody use should be optimized for each application and assay.

Storage

Storage:

Store at -80°C.

Storage buffer:

PBS only

For technical support and original validation data for this product please contact:

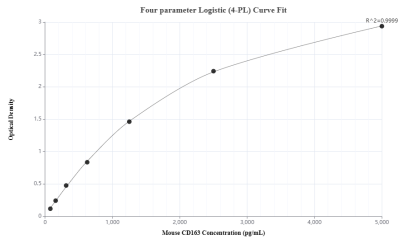
T: 1 (888) 4PTGLAB (1-888-478-4522) (toll free in USA), or 1(312) 455-8498 (outside USA)

E: proteintech@ptglab.com

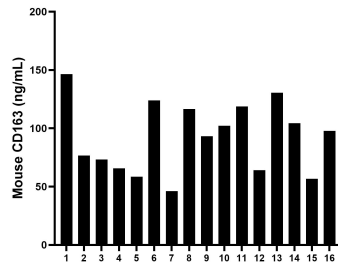
W: ptglab.com

This product is exclusively available under Proteintech Group brand and is not available to purchase from any other manufacturer.

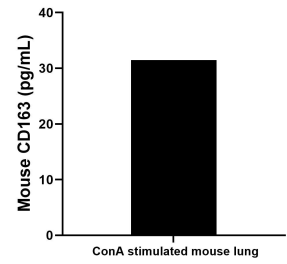
Selected Validation Data



Sandwich ELISA standard curve of MP00326-3, mouse CD163 Recombinant Matched Antibody Pair - PBS only. 83285-1-PBS was coated to a plate as the capture antibody and incubated with serial dilutions of standard: Eg0794. 83285-2-PBS was HRP conjugated as the detection antibody. Range: 78.1-5000 pg/mL.



Serum of sixteen mice was measured. The CD163 concentration of detected samples was determined to be 92.2 ng/mL with a range of 46.2-146.5 ng/mL.



For the mouse lung supernatant cultured for 3 days, the mean mouse CD163 concentration was determined to be 154.4 pg/mL in ConA stimulated mouse lung supernatant.