

For Research Use Only

# gp130/IL6ST Recombinant Matched Antibody Pair, PBS Only



Catalog Number:MP00324-3

## Capture Antibody Information

**Catalog Number:**  
83284-7-PBS  
**Host:**  
Rabbit  
**Isotype:**  
IgG  
**Purification Method:**  
Protein A purification

**Clone ID:**  
240992G3  
**Reactivity:**  
human

**Conjugate:**  
Unconjugated  
**Full name:**  
interleukin 6 signal transducer (gp130, oncostatin M receptor)  
**Gene ID:**  
3572

## Detection Antibody Information

**Catalog Number:**  
83284-4-PBS  
**Host:**  
Rabbit  
**Isotype:**  
IgG  
**Purification Method:**  
Protein A purification

**Clone ID:**  
240992A5  
**Reactivity:**  
human  
**GenBank:**  
NM\_002184.3

**Conjugate:**  
Unconjugated  
**Full name:**  
interleukin 6 signal transducer (gp130, oncostatin M receptor)  
**Gene ID:**  
3572

## Applications

**Tested Applications:**  
Sandwich ELISA

**Range:**  
0.156-10 ng/mL (Sandwich ELISA)

**Recommended Dilutions:**  
It is recommended that this reagent should be titrated in each testing system to obtain optimal results.

## Product Information

MP00324-3 targets gp130/IL6ST in immunoassays as a matched antibody pair. Validated in Sandwich ELISA.

Capture antibody: gp130/IL6ST Recombinant antibody, PBS Only (Capture) 83284-7-PBS (240992G3). 100 µg. Concentration 1 mg/ml.

Detection antibody: gp130/IL6ST Recombinant antibody, PBS Only (Detector) 83284-4-PBS (240992A5). 100 µg. Concentration 1 mg/ml.

Alternative gp130/IL6ST matched antibody pairs: MP00324-1, MP00324-2, MP01049-1, MP01049-2, MP01049-3, MP50086-1

Unconjugated rabbit recombinant monoclonal antibody pair in PBS only storage buffer at a concentration of 1 mg/mL, ready for conjugation. Created using Proteintech's proprietary in-house recombinant technology. Recombinant production enables unrivalled batch-to-batch consistency, easy scale-up, and future security of supply.

Matched antibody pairs are designed for use in a variety of assays and platforms that require matched antibody pairs.

Antibody use should be optimized for each application and assay.

## Storage

**Storage:**  
Store at -80°C.  
**Storage buffer:**  
PBS only

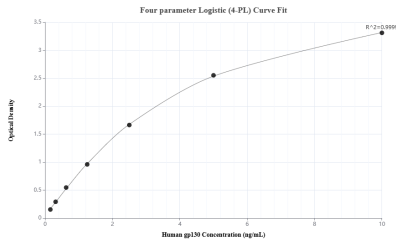
For technical support and original validation data for this product please contact:

T: 1 (888) 4PTGLAB (1-888-478-4522) (toll free in USA), or 1(312) 455-8498 (outside USA)

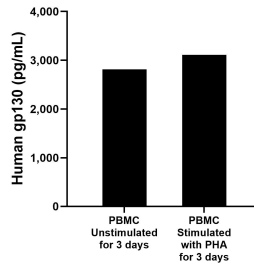
E: [proteintech@ptglab.com](mailto:proteintech@ptglab.com)  
W: [ptglab.com](http://ptglab.com)

**This product is exclusively available under Proteintech Group brand and is not available to purchase from any other manufacturer.**

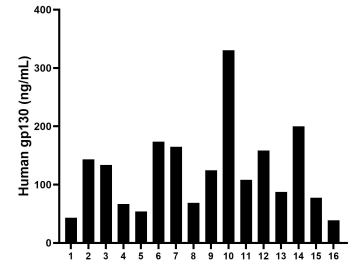
## Selected Validation Data



Sandwich ELISA standard curve of MP00324-3, Human gp130 Recombinant Matched Antibody Pair - PBS only. 83284-7-PBS was coated to a plate as the capture antibody and incubated with serial dilutions of standard Eg0024. 83284-4-PBS was HRP conjugated as the detection antibody. Range: 0.156-10 ng/mL



Human peripheral blood mononuclear cells (PBMC) ( $1 \times 10^6$  cells/mL) were cultured in DMEM supplemented with 8% fetal bovine serum, 5  $\mu$ M  $\beta$ -mercaptoethanol, 2 mM L-glutamine, 100 U/mL penicillin, and 100  $\mu$ g/mL streptomycin sulfate. Cells were cultured unstimulated or stimulated with 10  $\mu$ g/mL PHA for 3 days. Aliquots of the cell culture supernates were removed and assayed for levels of human gp130.



Serum of sixteen individual healthy human donors was measured. The human gp130 concentration of detected samples was determined to be 123.3 ng/mL with a range of 38.7 - 330.5 ng/mL