

For Research Use Only

# MPO Recombinant Matched Antibody Pair, PBS Only



Catalog Number:MP00321-2

## Capture Antibody Information

**Catalog Number:**  
83282-4-PBS  
**Host:**  
Rabbit  
**Isotype:**  
IgG  
**Purification Method:**  
Protein A purification

**Clone ID:**  
240229G6  
**Reactivity:**  
human

**Conjugate:**  
Unconjugated  
**Full name:**  
myeloperoxidase  
**Gene ID:**  
4353

## Detection Antibody Information

**Catalog Number:**  
83282-5-PBS  
**Host:**  
Rabbit  
**Isotype:**  
IgG  
**Purification Method:**  
Protein A purification

**Clone ID:**  
240229A6  
**Reactivity:**  
human  
**GenBank:**  
BC130476

**Conjugate:**  
Unconjugated  
**Full name:**  
myeloperoxidase  
**Gene ID:**  
4353

## Applications

**Tested Applications:**  
Sandwich ELISA

**Range:**  
39-2500 pg/mL (Sandwich ELISA)

**Recommended Dilutions:**  
It is recommended that this reagent should be titrated in each testing system to obtain optimal results.

## Product Information

MP00321-2 targets MPO in immunoassays as a matched antibody pair. Validated in Sandwich ELISA.  
Capture antibody: MPO Recombinant antibody, PBS Only (Capture) 83282-4-PBS (240229G6). 100 µg. Concentration 1 mg/ml.  
Detection antibody: MPO Recombinant antibody, PBS Only (Detector) 83282-5-PBS (240229A6). 100 µg. Concentration 1 mg/ml.  
Alternative MPO matched antibody pairs: MP00321-1, MP50164-1  
Unconjugated rabbit recombinant monoclonal antibody pair in PBS only storage buffer at a concentration of 1 mg/mL, ready for conjugation. Created using Proteintech's proprietary in-house recombinant technology. Recombinant production enables unrivalled batch-to-batch consistency, easy scale-up, and future security of supply. Matched antibody pairs are designed for use in a variety of assays and platforms that require matched antibody pairs.  
Antibody use should be optimized for each application and assay.

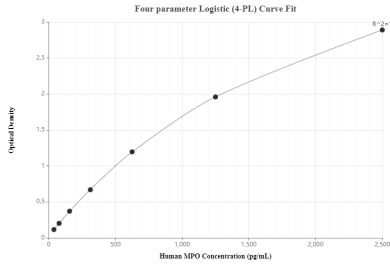
## Storage

**Storage:**  
Store at -80°C.  
**Storage buffer:**  
PBS only

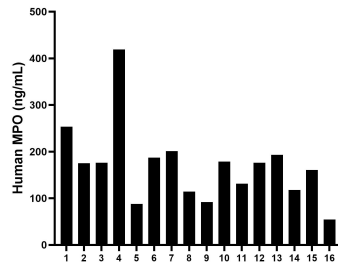
For technical support and original validation data for this product please contact:  
T: 1 (888) 4PTGLAB (1-888-478-4522) (toll free in USA), or 1(312) 455-8498 (outside USA)      E: proteintech@ptglab.com  
W: ptglab.com

This product is exclusively available under Proteintech Group brand and is not available to purchase from any other manufacturer.

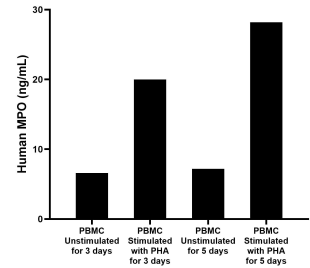
## Selected Validation Data



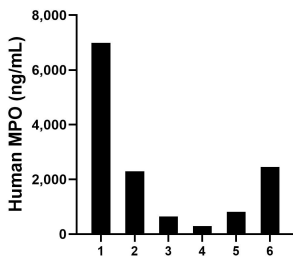
Sandwich ELISA standard curve of MP00321-2, Human MPO Recombinant Matched Antibody Pair - PBS only. 83282-4-PBS was coated to a plate as the capture antibody and incubated with serial dilutions of standard Eg0511. 83282-5-PBS was HRP conjugated as the detection antibody. Range: 39-2500 pg/mL



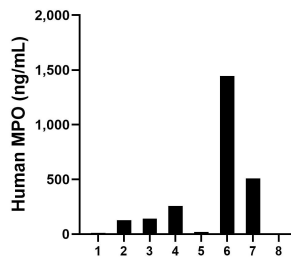
Serum of sixteen individual healthy human donors was measured. The MPO concentration of detected samples was determined to be 169.9 ng/mL with a range of 54.5 - 419.2 ng/mL.



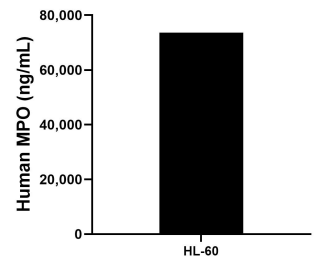
Human peripheral blood mononuclear cells (PBMC) were cultured unstimulated or stimulated with 10 µg/mL PHA for 3 days or 5 days. For the PBMC supernatant cultured for 3 days, the mean MPO concentration was determined to be 6.6 ng/mL in unstimulated PBMC supernatant, 20.0 ng/mL in PHA stimulated PBMC supernatant. For the PBMC supernatant cultured for 5 days, the mean MPO concentration was determined to be 7.2 ng/mL in unstimulated PBMC supernatant,



Urine of six individual healthy human donors was measured. The MPO concentration of detected samples was determined to be 2,249.9 pg/mL with a range of 294.1 - 6,991.1 pg/mL



Saliva of eight individual healthy human donors was measured. The MPO concentration of detected samples was determined to be 314.7 ng/mL with a range of 6.3 - 1,446.1 ng/mL



The mean MPO concentration was determined to be 73,583.3 ng/mL in HL-60 cell extract based on a 4.3 mg/mL extract load.