

For Research Use Only

IGFBP7 Recombinant Matched Antibody Pair, PBS Only



Catalog Number:MP00319-4

Capture Antibody Information

Catalog Number:
83292-6-PBS
Host:
Rabbit
Isotype:
IgG
Purification Method:
Protein A purification

Clone ID:
240228A2
Reactivity:
human

Conjugate:
Unconjugated
Full name:
insulin-like growth factor binding protein 7
Gene ID:
3490

Detection Antibody Information

Catalog Number:
83292-7-PBS
Host:
Rabbit
Isotype:
IgG
Purification Method:
Protein A purification

Clone ID:
240228B5
Reactivity:
human
GenBank:
NM_001553.2

Conjugate:
Unconjugated
Full name:
insulin-like growth factor binding protein 7
Gene ID:
3490

Applications

Tested Applications:
Sandwich ELISA

Range:
0.313-20 ng/mL (Sandwich ELISA)

Recommended Dilutions:
It is recommended that this reagent should be titrated in each testing system to obtain optimal results.

Product Information

MP00319-4 targets IGFBP7 in immunoassays as a matched antibody pair. Validated in Sandwich ELISA.

Capture antibody: IGFBP7 Recombinant antibody, PBS Only (Capture) 83292-6-PBS (240228A2). 100 µg. Concentration 1 mg/ml.

Detection antibody: IGFBP7 Recombinant antibody, PBS Only (Detector) 83292-7-PBS (240228B5). 100 µg. Concentration 1 mg/ml.

Alternative IGFBP7 matched antibody pairs: MP00319-1, MP00319-2, MP00319-3, MP50270-1, MP50270-2, MP50270-3

Unconjugated rabbit recombinant monoclonal antibody pair in PBS only storage buffer at a concentration of 1 mg/mL, ready for conjugation. Created using Proteintech's proprietary in-house recombinant technology. Recombinant production enables unrivalled batch-to-batch consistency, easy scale-up, and future security of supply.

Matched antibody pairs are designed for use in a variety of assays and platforms that require matched antibody pairs.

Antibody use should be optimized for each application and assay.

Storage

Storage:
Store at -80°C.
Storage buffer:
PBS only

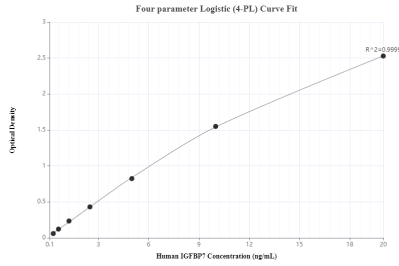
For technical support and original validation data for this product please contact:

T: 1 (888) 4PTGLAB (1-888-478-4522) (toll free in USA), or 1(312) 455-8498 (outside USA)

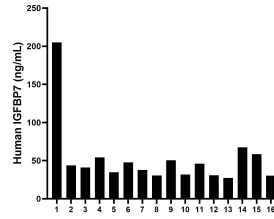
E: proteintech@ptglab.com
W: ptglab.com

This product is exclusively available under Proteintech Group brand and is not available to purchase from any other manufacturer.

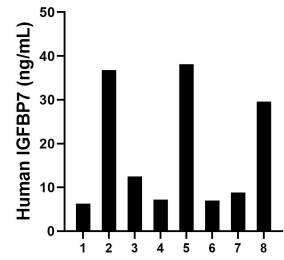
Selected Validation Data



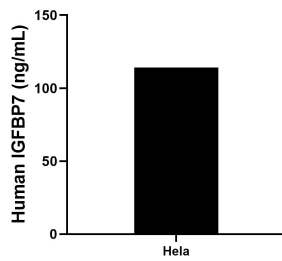
Sandwich ELISA standard curve of MP00319-4, Human IGFBP7 Monoclonal Matched Antibody Pair - PBS only. 83292-6-PBS was coated to a plate as the capture antibody and incubated with serial dilutions of standard Eg0815. 83292-7-PBS was HRP conjugated as the detection antibody. Range: 0.313-20 ng/mL



Serum of sixteen individual healthy human donors were measured. The human IGFBP7 concentration of detected samples was determined to be 52.3 ng/mL with a range of 27.4 - 205.1 ng/mL.



Urine of eight individual healthy human donors was measured. The human IGFBP7 concentration of detected samples was determined to be 18.3 ng/mL with a range of 6.3 - 38.1 ng/mL.



HeLa were cultured in DMEM supplemented with 10% fetal bovine serum, 2.5 mM L-glutamine, 100 U/mL penicillin, and 100 µg/mL streptomycin sulfate. An aliquot of the cell culture supernatants was removed, assayed for human IGFBP7, and measured 114.2 ng/mL.