

For Research Use Only

# Mouse HO-1/Hmox1 Recombinant Matched Antibody Pair, PBS Only



Catalog Number:MP00318-3

## Capture Antibody Information

**Catalog Number:**  
83291-4-PBS  
**Host:**  
Rabbit  
**Isotype:**  
IgG  
**Purification Method:**  
Protein A purification

**Clone ID:**  
240236H1  
**Reactivity:**  
mouse

**Conjugate:**  
Unconjugated  
**Full name:**  
heme oxygenase (decycling) 1  
**Gene ID:**  
15368

## Detection Antibody Information

**Catalog Number:**  
83291-2-PBS  
**Host:**  
Rabbit  
**Isotype:**  
IgG  
**Purification Method:**  
Protein A purification

**Clone ID:**  
240236G6  
**Reactivity:**  
mouse  
**GenBank:**  
NM\_010442.2

**Conjugate:**  
Unconjugated  
**Full name:**  
heme oxygenase (decycling) 1  
**Gene ID:**  
15368

## Applications

**Tested Applications:**  
Sandwich ELISA

**Range:**  
78.1-5000 pg/mL (Sandwich ELISA)

**Recommended Dilutions:**  
It is recommended that this reagent should be titrated in each testing system to obtain optimal results.

## Product Information

MP00318-3 targets HO-1/Hmox1 in immunoassays as a matched antibody pair. Validated in Sandwich ELISA.  
Capture antibody: Mouse HO-1/Hmox1 Recombinant antibody, PBS Only (Capture) 83291-4-PBS (240236H1). 100 µg. Concentration 1 mg/ml.  
Detection antibody: Mouse HO-1/Hmox1 Recombinant antibody, PBS Only (Detector) 83291-2-PBS (240236G6). 100 µg. Concentration 1 mg/ml.  
Alternative HO-1/Hmox1 matched antibody pairs: MP00318-1, MP00318-2  
Unconjugated rabbit recombinant monoclonal antibody pair in PBS only storage buffer at a concentration of 1 mg/mL, ready for conjugation. Created using Proteintech's proprietary in-house recombinant technology. Recombinant production enables unrivalled batch-to-batch consistency, easy scale-up, and future security of supply. Matched antibody pairs are designed for use in a variety of assays and platforms that require matched antibody pairs.  
Antibody use should be optimized for each application and assay.

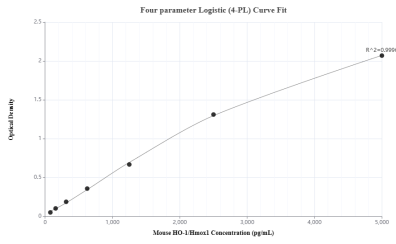
## Storage

**Storage:**  
Store at -80°C.  
**Storage buffer:**  
PBS only

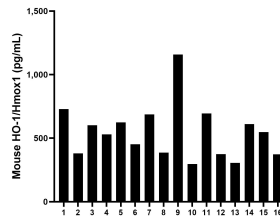
For technical support and original validation data for this product please contact:  
T: 1 (888) 4PTGLAB (1-888-478-4522) (toll free in USA), or 1(312) 455-8498 (outside USA) E: [proteintech@ptglab.com](mailto:proteintech@ptglab.com) W: [ptglab.com](http://ptglab.com)

This product is exclusively available under Proteintech Group brand and is not available to purchase from any other manufacturer.

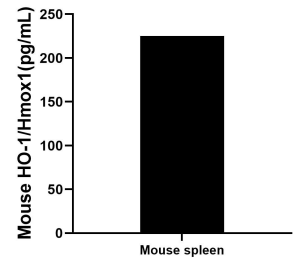
## Selected Validation Data



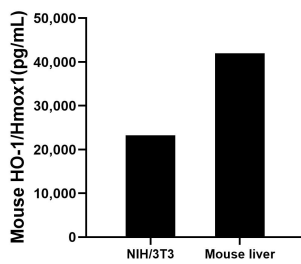
Sandwich ELISA standard curve of MP00318-3, mouse HO-1/Hmox1 Recombinant Matched Antibody Pair - PBS only. 83291-4-PBS was coated to a plate as the capture antibody and incubated with serial dilutions of standard: Eg0938. 83291-2-PBS was HRP conjugated as the detection antibody. Range: 78.1-5000 pg/mL



Serum of sixteen mice was measured. The mouse HO-1/Hmox1 concentration of detected samples was determined to be 547.1 pg/mL with a range of 297.1 - 1,158.6 pg/mL.



Mouse spleen tissue (3 spleen in 1-2 mm pieces in 100 mL of medium) was cultured in RPMI supplemented with 10% fetal bovine serum, 50 μM β-mercaptoethanol, 2 mM L-glutamine, 100 U/mL penicillin, and 100 μg/mL streptomycin sulfate. An aliquot of the cell culture supernatant was removed, assayed for mouse HO-1/Hmox1, and measured 225.2 pg/mL.



The mean mouse HO-1/Hmox1 concentration was determined to be 23,262.0 pg/mL in NIH/3T3 cell extract based on a 7.8 mg/mL extract load and 41,977.1 pg/mL in mouse liver extract based on a 5 mg/mL extract load.