

For Research Use Only

SLC22A4 Recombinant Matched Antibody Pair, PBS Only



Catalog Number:MP00292-2

Capture Antibody Information

Catalog Number:
83192-2-PBS
Host:
Rabbit
Isotype:
IgG
Purification Method:
Protein A purification

Clone ID:
240064F6
Reactivity:
Human
Immunogen Catalog Number:
Ag3974

Conjugate:
Unconjugated
Full name:
solute carrier family 22 (organic cation/ergothioneine transporter), member 4
Gene ID:
6583

Detection Antibody Information

Catalog Number:
83192-4-PBS
Host:
Rabbit
Isotype:
IgG
Purification Method:
Protein A purification

Clone ID:
240064G1
Reactivity:
Human
GenBank:
BC028313
Immunogen Catalog Number:
Ag3974

Conjugate:
Unconjugated
Full name:
solute carrier family 22 (organic cation/ergothioneine transporter), member 4
Gene ID:
6583

Applications

Tested Applications:
Cytometric bead array

Range:
1.25-40 ng/mL (Cytometric Bead Array)

Recommended Dilutions:
It is recommended that this reagent should be titrated in each testing system to obtain optimal results.

Product Information

MP00292-2 targets SLC22A4 in immunoassays as a matched antibody pair. Validated in Cytometric bead array.
Capture antibody: SLC22A4 Recombinant antibody, PBS Only (Capture) 83192-2-PBS (240064F6). 100 µg. Concentration 1 mg/ml.
Detection antibody: SLC22A4 Recombinant antibody, PBS Only (Capture/Detector) 83192-4-PBS (240064G1). 100 µg. Concentration 1 mg/ml.
Alternative SLC22A4 matched antibody pairs: MP00292-1, MP00292-3
Unconjugated rabbit recombinant monoclonal antibody pair in PBS only (BSA and azide free) storage buffer at a concentration of 1 mg/mL, ready for conjugation. Created using Proteintech's proprietary in-house recombinant technology. Recombinant production enables unrivalled batch-to-batch consistency, easy scale-up, and future security of supply.
Matched antibody pairs are designed for use in a variety of assays and platforms that require matched antibody pairs.
Antibody use should be optimized for each application and assay.

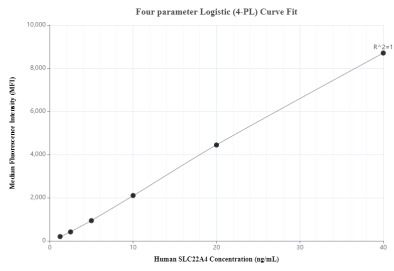
Storage

Storage:
Store at -80°C.
Storage buffer:
PBS only

For technical support and original validation data for this product please contact:
T: 1 (888) 4PTGLAB (1-888-478-4522) (toll free in USA), or 1(312) 455-8498 (outside USA) E: proteintech@ptglab.com W: ptglab.com

This product is exclusively available under Proteintech Group brand and is not available to purchase from any other manufacturer.

Selected Validation Data



Cytometric bead array standard curve of MP00292-2, SLC22A4 Recombinant Matched Antibody Pair, PBS Only. Capture antibody: 83192-2-PBS. Detection antibody: 83192-4-PBS. Standard: Ag3974. Range: 1.25-40 ng/mL.