

HIRA Recombinant Matched Antibody Pair, PBS Only

Catalog Number:MP00291-1

Capture Antibody Information

Catalog Number:

83194-3-PBS

Host:

Rabbit

Isotype:

IgG

Purification Method:

Protein A purification

Clone ID:

240006C5

Reactivity:

human

Immunogen Catalog Number:

Ag34439

Conjugate:

Unconjugated

Full name:

HIR histone cell cycle regulation defective homolog A (*S. cerevisiae*)

Gene ID:

7290

Detection Antibody Information

Catalog Number:

83194-1-PBS

Host:

Rabbit

Isotype:

IgG

Purification Method:

Protein A purification

Clone ID:

240006A7

Reactivity:

human

GenBank:

NM_003325

Immunogen Catalog Number:

Ag34439

Conjugate:

Unconjugated

Full name:

HIR histone cell cycle regulation defective homolog A (*S. cerevisiae*)

Gene ID:

7290

Applications

Tested Applications:

Cytometric bead array, Sandwich ELISA

Range:

0.625-20 ng/mL (Cytometric Bead Array)
0.313-20 ng/mL (Sandwich ELISA)

Recommended Dilutions:

It is recommended that this reagent should be titrated in each testing system to obtain optimal results.

Product Information

MP00291-1 targets HIRA in immunoassays as a matched antibody pair. Validated in Cytometric bead array, Sandwich ELISA.

Capture antibody: HIRA Recombinant antibody, PBS Only (Capture) 83194-3-PBS (240006C5). 100 µg. Concentration 1 mg/mL.

Detection antibody: HIRA Recombinant antibody, PBS Only (Detector) 83194-1-PBS (240006A7). 100 µg. Concentration 1 mg/mL.

Alternative HIRA matched antibody pairs: MP00291-2

Unconjugated rabbit recombinant monoclonal antibody pair in PBS only storage buffer at a concentration of 1 mg/mL, ready for conjugation. Created using Proteintech's proprietary in-house recombinant technology. Recombinant production enables unrivalled batch-to-batch consistency, easy scale-up, and future security of supply.

Matched antibody pairs are designed for use in a variety of assays and platforms that require matched antibody pairs.

Antibody use should be optimized for each application and assay.

Storage

Storage:

Store at -80°C.

Storage buffer:

PBS only

For technical support and original validation data for this product please contact:

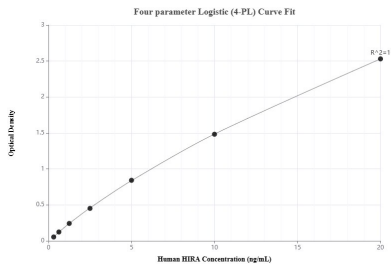
T: 1 (888) 4PTGLAB (1-888-478-4522) (toll free in USA), or 1(312) 455-8498 (outside USA)

E: proteintech@ptglab.com

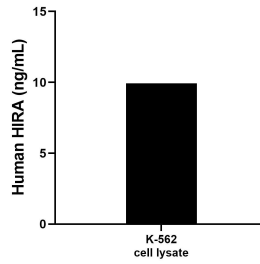
W: ptglab.com

This product is exclusively available under Proteintech Group brand and is not available to purchase from any other manufacturer.

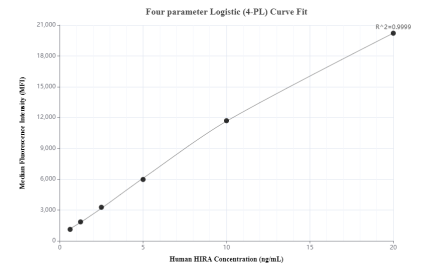
Selected Validation Data



Sandwich ELISA standard curve of MP00291-1, Human HIRA Recombinant Matched Antibody Pair - PBS only. 83194-3-PBS was coated to a plate as the capture antibody and incubated with serial dilutions of standard Ag34439. 83194-1-PBS was HRP conjugated as the detection antibody. Range: 0.313-20 ng/mL



K-562 cell lysates were measured. The human HIAR concentration of detected samples was determined to be 9.93 ng/mL (based on a 4.5 mg/mL extract load) in K-562 cell lysate.



Cytometric bead array standard curve of MP00291-1, HIRA Recombinant Matched Antibody Pair, PBS Only. Capture antibody: 83194-3-PBS. Detection antibody: 83194-1-PBS. Standard: Ag34439. Range: 0.625-20 ng/mL