

For Research Use Only

# IGFBP4 Recombinant Matched Antibody Pair, PBS Only



Catalog Number:MP00279-2

## Capture Antibody Information

**Catalog Number:**  
83200-4-PBS  
**Host:**  
Rabbit  
**Isotype:**  
IgG  
**Purification Method:**  
Protein A purification

**Clone ID:**  
230543H7  
**Reactivity:**  
human

**Conjugate:**  
Unconjugated  
**Full name:**  
insulin-like growth factor binding protein 4  
**Gene ID:**  
3487

## Detection Antibody Information

**Catalog Number:**  
83200-1-PBS  
**Host:**  
Rabbit  
**Isotype:**  
IgG  
**Purification Method:**  
Protein A purification

**Clone ID:**  
230543B11  
**Reactivity:**  
human  
**GenBank:**  
NM\_001552.3

**Conjugate:**  
Unconjugated  
**Full name:**  
insulin-like growth factor binding protein 4  
**Gene ID:**  
3487

## Applications

**Tested Applications:**  
Sandwich ELISA

**Range:**  
0.313-20 ng/mL (Sandwich ELISA)

**Recommended Dilutions:**  
It is recommended that this reagent should be titrated in each testing system to obtain optimal results.

## Product Information

MP00279-2 targets IGFBP4 in immunoassays as a matched antibody pair. Validated in Sandwich ELISA.

Capture antibody: IGFBP4 Recombinant antibody, PBS Only (Capture) 83200-4-PBS (230543H7). 100 µg. Concentration 1 mg/ml.

Detection antibody: IGFBP4 Recombinant antibody, PBS Only (Detector) 83200-1-PBS (230543B11). 100 µg. Concentration 1 mg/ml.

Alternative IGFBP4 matched antibody pairs: MP00279-1, MP50212-1, MP50212-2

Unconjugated rabbit recombinant monoclonal antibody pair in PBS only storage buffer at a concentration of 1 mg/mL, ready for conjugation. Created using Proteintech's proprietary in-house recombinant technology. Recombinant production enables unrivalled batch-to-batch consistency, easy scale-up, and future security of supply.

Matched antibody pairs are designed for use in a variety of assays and platforms that require matched antibody pairs.

Antibody use should be optimized for each application and assay.

## Storage

**Storage:**  
Store at -80°C.  
**Storage buffer:**  
PBS only

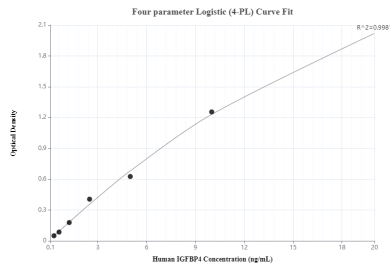
For technical support and original validation data for this product please contact:

T: 1 (888) 4PTGLAB (1-888-478-4522) (toll free in USA), or 1(312) 455-8498 (outside USA)

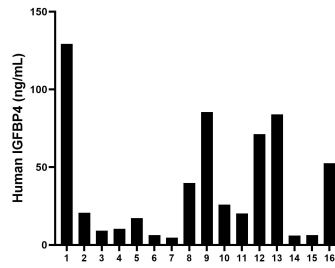
E: [proteintech@ptglab.com](mailto:proteintech@ptglab.com)  
W: [ptglab.com](http://ptglab.com)

This product is exclusively available under Proteintech Group brand and is not available to purchase from any other manufacturer.

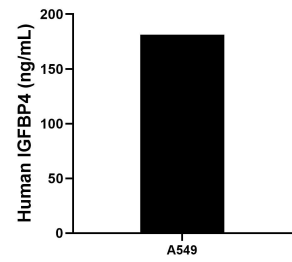
## Selected Validation Data



Sandwich ELISA standard curve of MP00279-2, Human IGFBP4 Recombinant Matched Antibody Pair - PBS only. 83200-4-PBS was coated to a plate as the capture antibody and incubated with serial dilutions of standard Eg0825. 83200-1-PBS was HRP conjugated as the detection antibody. Range: 0.313-20 ng/mL



Serum of sixteen individual healthy human donors was measured. The IGFBP4 concentration of detected samples was determined to be 36.9 ng/mL with a range of 4.7 - 129.3 ng/mL



A549 were cultured in DMEM supplemented with 10% fetal bovine serum, 2.5 mM L-glutamine, 100 U/mL penicillin, and 100 µg/mL streptomycin sulfate. The mean IGFBP4 concentration was determined to be 181.3 ng/mL in A549 cell supernatant.