

For Research Use Only

TIMP1 Recombinant Matched Antibody Pair, PBS Only



Catalog Number:MP00245-4

Capture Antibody Information

Catalog Number:
83151-3-PBS

Host:
Rabbit

Isotype:
IgG

Purification Method:
Protein A purification

Clone ID:
230329E8

Reactivity:
human

Conjugate:
Unconjugated

Full name:
TIMP metalloproteinase inhibitor 1

Gene ID:
7076

Affinity:
 $K_D = 2.16 \times 10^{-11}M$
 $K_{off} = 4.92 \times 10^{-5}M$
 $K_{on} = 2.28 \times 10^6M$

Detection Antibody Information

Catalog Number:
83151-7-PBS

Host:
Rabbit

Isotype:
IgG

Purification Method:
Protein A purification

Clone ID:
230329F6

Reactivity:
human

GenBank:
BC000866

Conjugate:
Unconjugated

Full name:
TIMP metalloproteinase inhibitor 1

Gene ID:
7076

Applications

Tested Applications:
Sandwich ELISA

Range:
15.6-1000 pg/mL (Sandwich ELISA)

Recommended Dilutions:
It is recommended that this reagent should be titrated in each testing system to obtain optimal results.

Product Information

MP00245-4 targets TIMP1 in immunoassays as a matched antibody pair. Validated in Sandwich ELISA.

Capture antibody: TIMP1 Recombinant antibody, PBS Only (Capture) 83151-3-PBS (230329E8). 100 µg. Concentration 1 mg/mL.

Detection antibody: TIMP1 Recombinant antibody, PBS Only (Detector) 83151-7-PBS (230329F6). 100 µg. Concentration 1 mg/mL.

Alternative TIMP1 matched antibody pairs: MP00245-1, MP00245-2, MP00245-3, MP50084-1, MP50084-2

Unconjugated rabbit recombinant monoclonal antibody pair in PBS only storage buffer at a concentration of 1 mg/mL, ready for conjugation. Created using Proteintech's proprietary in-house recombinant technology. Recombinant production enables unrivalled batch-to-batch consistency, easy scale-up, and future security of supply.

Matched antibody pairs are designed for use in a variety of assays and platforms that require matched antibody pairs.

Antibody use should be optimized for each application and assay.

Storage

Storage:
Store at -80°C.
Storage buffer:
PBS only

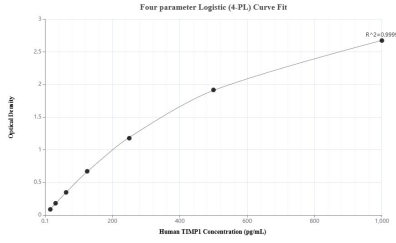
For technical support and original validation data for this product please contact:

T: 1 (888) 4PTGLAB (1-888-478-4522) (toll free in USA), or 1(312) 455-8498 (outside USA)

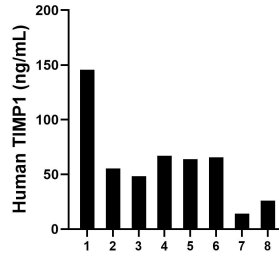
E: proteintech@ptglab.com
W: ptglab.com

This product is exclusively available under Proteintech Group brand and is not available to purchase from any other manufacturer.

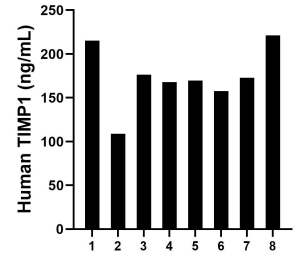
Selected Validation Data



Sandwich ELISA standard curve of MP00245-4, Human TIMP1 Recombinant Matched Antibody Pair - PBS only. 83151-3-PBS was coated to a plate as the capture antibody and incubated with serial dilutions of standard Eg0638. 83151-7-PBS was HRP conjugated as the detection antibody. Range: 15.6-1000 pg/mL



Saliva of eight individual healthy human donors was measured. The human TIMP1 concentration of detected samples was determined to be 60.8 ng/mL with a range of 14.2 - 145.8 pg/mL.



Serum of eight individual healthy human donors was measured. The human TIMP1 concentration of detected samples was determined to be 173.6 ng/mL with a range of 108.8 - 221.2 pg/mL.