

For Research Use Only

# MS4A12 Recombinant Matched Antibody Pair, PBS Only



Catalog Number:MP00244-2

## Capture Antibody Information

**Catalog Number:**  
83261-2-PBS  
**Host:**  
Rabbit  
**Isotype:**  
IgG  
**Purification Method:**  
Protein A purification

**Clone ID:**  
240105D5  
**Reactivity:**  
Human  
**Immunogen Catalog Number:**  
Ag3968

**Conjugate:**  
Unconjugated  
**Full name:**  
membrane-spanning 4-domains, subfamily A, member 12  
**Gene ID:**  
54860

## Detection Antibody Information

**Catalog Number:**  
83261-1-PBS  
**Host:**  
Rabbit  
**Isotype:**  
IgG  
**Purification Method:**  
Protein A purification

**Clone ID:**  
240105A11  
**Reactivity:**  
Human  
**GenBank:**  
BC029793  
**Immunogen Catalog Number:**  
Ag3968

**Conjugate:**  
Unconjugated  
**Full name:**  
membrane-spanning 4-domains, subfamily A, member 12  
**Gene ID:**  
54860

## Applications

**Tested Applications:**  
Cytometric bead array

**Range:**  
0.625-20 ng/mL (Cytometric Bead Array)

**Recommended Dilutions:**  
It is recommended that this reagent should be titrated in each testing system to obtain optimal results.

## Product Information

MP00244-2 targets MS4A12 in immunoassays as a matched antibody pair. Validated in Cytometric bead array.

Capture antibody: MS4A12 Recombinant antibody, PBS Only (Capture) 83261-2-PBS (240105D5). 100 µg. Concentration 1 mg/ml.

Detection antibody: MS4A12 Recombinant antibody, PBS Only (Detector) 83261-1-PBS (240105A11). 100 µg. Concentration 1 mg/ml.

Alternative MS4A12 matched antibody pairs: MP00244-1

Unconjugated rabbit recombinant monoclonal antibody pair in PBS only (BSA and azide free) storage buffer at a concentration of 1 mg/mL, ready for conjugation. Created using Proteintech's proprietary in-house recombinant technology. Recombinant production enables unrivalled batch-to-batch consistency, easy scale-up, and future security of supply.

Matched antibody pairs are designed for use in a variety of assays and platforms that require matched antibody pairs.

Antibody use should be optimized for each application and assay.

## Storage

**Storage:**  
Store at -80°C.  
**Storage buffer:**  
PBS only

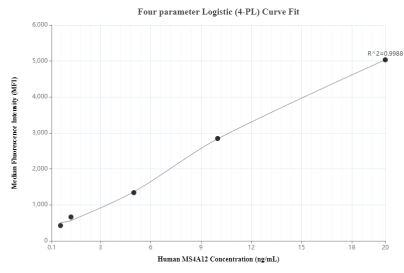
For technical support and original validation data for this product please contact:

T: 1 (888) 4PTGLAB (1-888-478-4522) (toll free in USA), or 1(312) 455-8498 (outside USA)

E: [proteintech@ptglab.com](mailto:proteintech@ptglab.com)  
W: [ptglab.com](http://ptglab.com)

**This product is exclusively available under Proteintech Group brand and is not available to purchase from any other manufacturer.**

## Selected Validation Data



Cytometric bead array standard curve of MP00244-2, MS4A12 Recombinant Matched Antibody Pair, PBS Only. Capture antibody: 83261-2-PBS. Detection antibody: 83261-1-PBS. Standard: Ag3968. Range: 0.625-20 ng/mL.